

# Safety Programmable Controller/ Safety Controller



# GLOBAL IMPACT OF MITSUBISHI ELECTRIC



Through Mitsubishi Electric's vision, "Changes for the Better" are possible for a brighter future.

## *Changes for the Better*

We bring together the best minds to create the best technologies. At Mitsubishi Electric, we understand that technology is the driving force of change in our lives. By bringing greater comfort to daily life, maximizing the efficiency of businesses and keeping things running across society, we integrate technology and innovation to bring changes for the better.

Mitsubishi Electric is involved in many areas including the following:

### **Energy and Electric Systems**

A wide range of power and electrical products from generators to large-scale displays.

### **Electronic Devices**

A wide portfolio of cutting-edge semiconductor devices for systems and products.

### **Home Appliance**

Dependable consumer products like air conditioners and home entertainment systems.

### **Information and Communication Systems**

Commercial and consumer-centric equipment, products and systems.

### **Industrial Automation Systems**

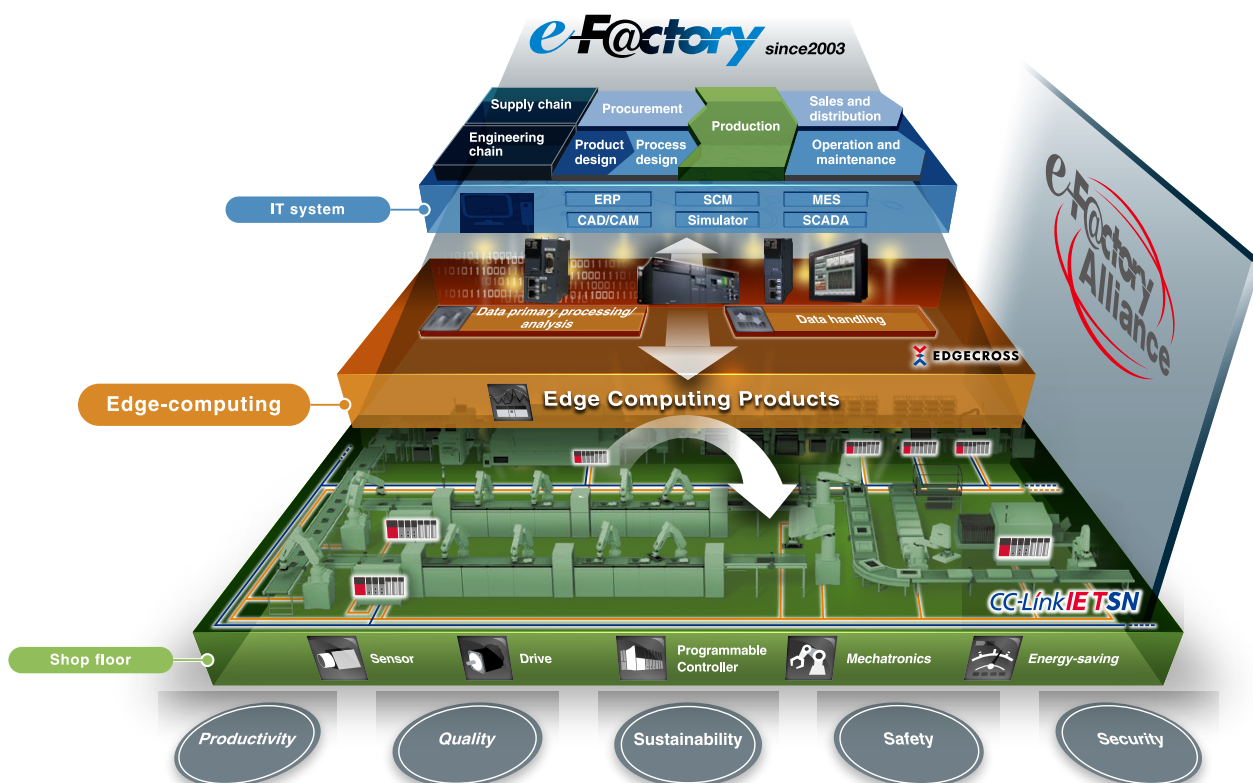
Maximizing productivity and efficiency with cutting-edge automation technology.

# Maximizing productivity and reducing total cost while adding value across the manufacturing enterprise

e-F@ctory is the Mitsubishi Electric solution for adding value across the manufacturing enterprise by enhancing productivity, and reducing the maintenance and operations costs together with seamless information flow throughout the plant. e-F@ctory uses a combination of factory automation and IT technologies in combination with various best-in-class partner products through its alliance program, offering solutions to reduce total cost while improving operations, production yield, and efficient management of the supply chain.



## FA integrated solution reducing total cost



## INDEX

Safety standards.....	4	Safety remote modules.....	14	Safety extension module	
MELSEC Selection Guide.....	6	Drives .....	16	MELSEC iQ-F Series .....	26
MELSEC iQ-R Series		Total safety solution.....	18	Safety components partner products .....	30
iQ Platform-compatible PAC .....	8	Safety controller		Support .....	35
CC-Link IETS N.....	12	MELSEC-WS Series .....	20	General specifications/Product list.....	39

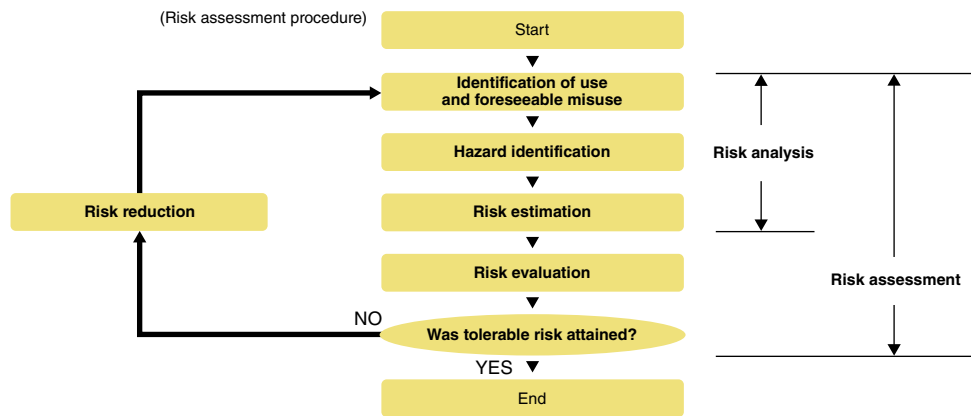
## International safety standards

International standards for machinery safety are hierarchically classified into the following types:

- Type A standards (basic safety standards): ISO 12100
- Type B standards (group safety standards): ISO 13849-1, IEC 61508, etc.
- Type C standards: Individual product standards

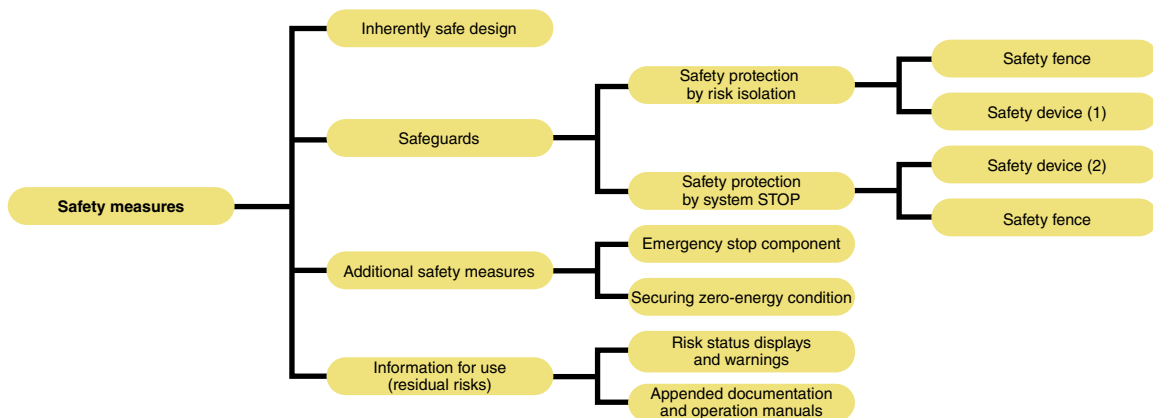
## ISO 12100 Risk assessment

"Risk assessment" refers to identifying potential hazards present in machinery and evaluating the degree of hazard (risk).



## ISO 12100 Risk reduction and safety measures

Under the International Safety Standards, protective measures are implemented to reduce risks to the degree that risks can be tolerated.



# EN ISO 13849-1 Performance level

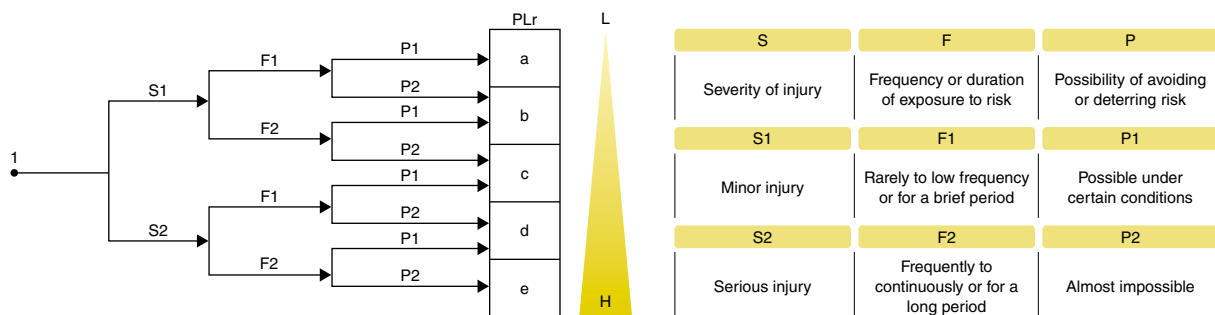
Frequency of a dangerous failure occurrence (the safety function does not work when needed), rate of a failure detection by diagnostics, etc. were added to evaluate comprehensively. The evaluation result is classified into five levels from "a" to "e" by the performance level (PL).

- The categories and the safety integrity level (SIL) described in the functional safety standard IEC 61508 can be referred to each other via the PL
- Like the safety categories, the risk is evaluated from a perspective of "S: Severity of injury, " "F: Frequency or duration of exposure to risk, " and "P: Possibility of avoidance"

## The functional safety standard IEC 61508

With progress of microprocessor technologies, widespread IT, more complex control, etc., demands for configuring safety systems using microprocessors and software have been increased. To meet such demands of the time, the functional safety concept was developed, and the functional safety standard IEC 61508 (electrical/electronic/programmable electronic safety-related systems), which applies to programmable controllers, was issued in 2000.

## Risk graph in EN ISO 13849-1 and PLr for safety function



## Safety category requirements

Category	Requirement summary	System behaviour
B	<ul style="list-style-type: none"> <li>• Shall realize the intended functions of safety-related parts of the machine control system</li> </ul>	<ul style="list-style-type: none"> <li>• The occurrence of a fault can lead to the loss of the safety function</li> </ul>
1	<ul style="list-style-type: none"> <li>• Shall meet the requirements of Category B</li> <li>• Shall use well-examined reliable components and observe safety principles</li> </ul>	<ul style="list-style-type: none"> <li>• The same as Category B, but the safety-related part has more reliable safety function</li> </ul>
2	<ul style="list-style-type: none"> <li>• Shall meet the requirements of Category B</li> <li>• Shall observe safety principles</li> <li>• Shall check the safety function at appropriate intervals</li> </ul>	<ul style="list-style-type: none"> <li>• Although the loss of the safety function can be detected by checking, the safety function is lost between checks</li> </ul>
3	<ul style="list-style-type: none"> <li>• Shall meet the requirements of Category B</li> <li>• Shall observe safety principles</li> <li>• Design requirements: A single fault shall not lead to the loss of the safety function</li> <li>• Detect as many single faults as possible</li> </ul>	<ul style="list-style-type: none"> <li>• The safety function is not lost by a single fault</li> <li>• Some but not all faults can be detected. Accumulation of undetected faults may lead to the loss of the safety function</li> </ul>
4	<ul style="list-style-type: none"> <li>• Shall meet the requirements of Category B</li> <li>• Shall observe safety principles</li> <li>• Design requirements: Detect a single fault at or before executing safety function. In cases where this is not possible, the safety function shall not be disabled by accumulated faults</li> </ul>	<ul style="list-style-type: none"> <li>• The safety function is always in effect whenever a fault occurs</li> <li>• Faults will be detected in time to prevent the loss of the safety function</li> </ul>

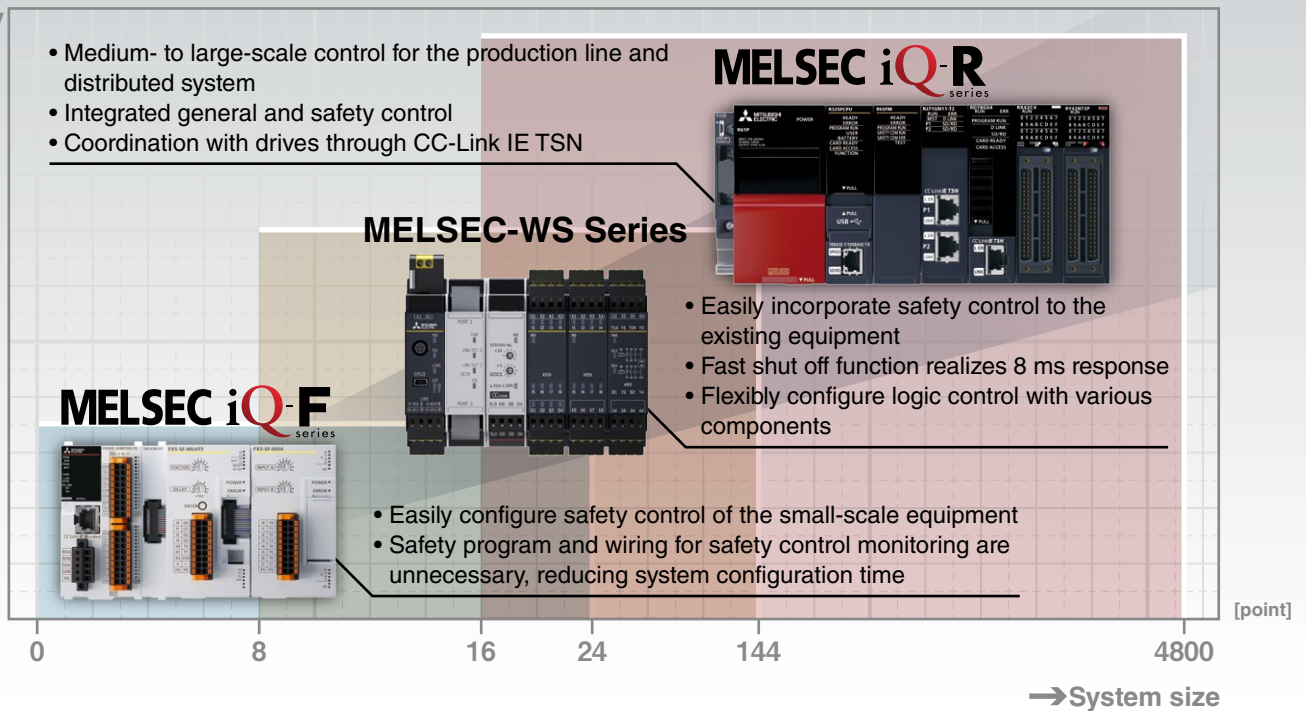
# MELSEC Selection Guide

## Safety control devices to meet customer's requirements

### Selection points

Appropriate devices according to the system scale and scalability are available.

Scalability  
↑



### Performance comparison table

The table below shows programming development environment, supported networks, and number of safety I/O points for each Series.

**S**: Safety communication **N**: Non-safety communication

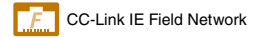
Series	iQ Platform-compatible PAC MELSEC iQ-R Series	Safety Controller MELSEC-WS Series	Safety extension module MELSEC iQ-F Series
Programming development environment	GX Works3	Setting and Monitoring Tool	-*1
Program capacity (step)	80K/160K/320K/1200K (40K for safety program)	255 (Function Blocks)	- (9 built-in program)
<b>Network</b>			
CC-Link IE TSN Network	<b>S</b> <b>N</b>	-	<b>N</b>
CC-Link IE Field Network	<b>S</b> <b>N</b>	-	<b>N</b>
CC-Link IE Control Network	<b>N</b>	-	-
Flexi Line/Link	-	<b>S</b>	-
Ethernet	<b>N</b>	<b>N</b>	<b>N</b>
CC-Link	<b>N</b>	<b>N</b>	<b>N</b>
<b>Number of safety I/O points</b>			
System scale (point)	4800	144	24
Safety I/O module per system Max. number of connectable modules	120 stations	12 modules	3 modules*2
Max. number of input points per system (single wiring) (point)	3840	96	20
Max. number of output points per system (single wiring) (point)	960	48	4

\*1. Stored program can be selected by setting the rotary switch, requiring no programming.

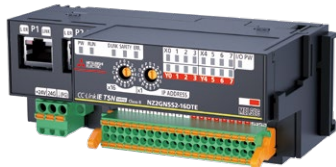
\*2. One safety main module and two safety input extension modules can be connected.

## Slave device lineup

Flexible system configuration is realized with block type remote modules and drives.



### Block type safety remote modules



NZ2GNSS2-16DTE



NZ2GFSS2-16DTE

### Drive products

#### AC servo MELSERVO



MELSERVO-J5

MELSERVO-J4

#### Inverter FREQROL



FR-E800

FR-A800\*1

#### Industrial robot MELFA

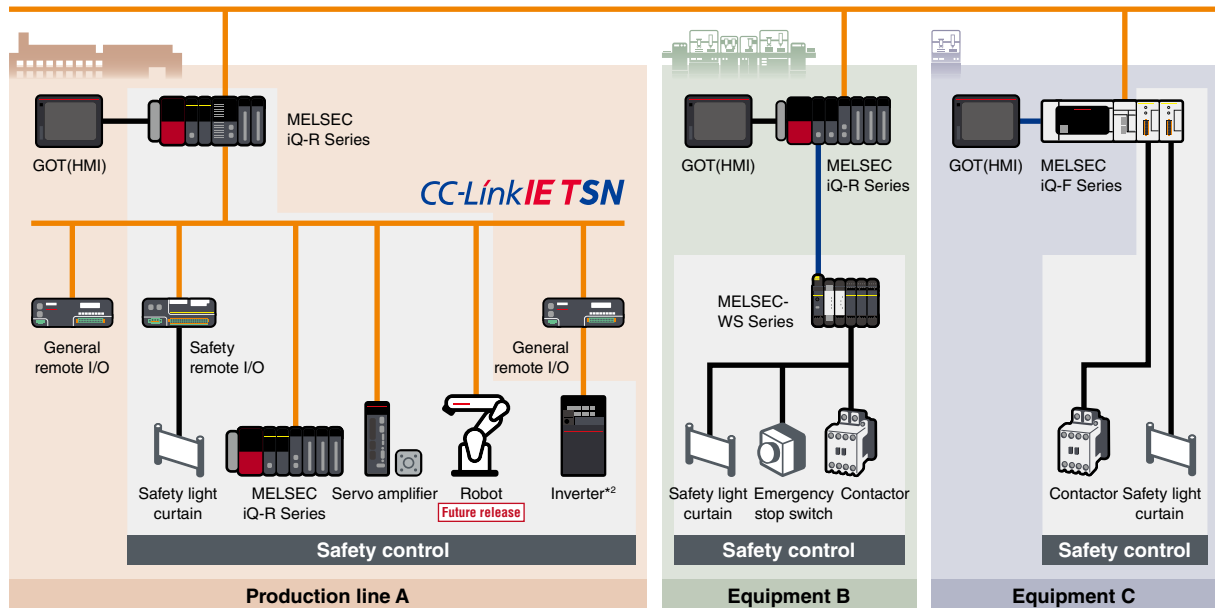


MELFA-FR\*1

## System configuration examples

From a small- to large-scale system according to requirements are realized with Mitsubishi Electric safety devices.

CC-Link IE TSN



\*1. Can be used in combination with a block type safety remote module (robot safety option is necessary for a robot).

\*2. A device supporting 100 Mbps should be connected following a device supporting 1 Gbps (class B).

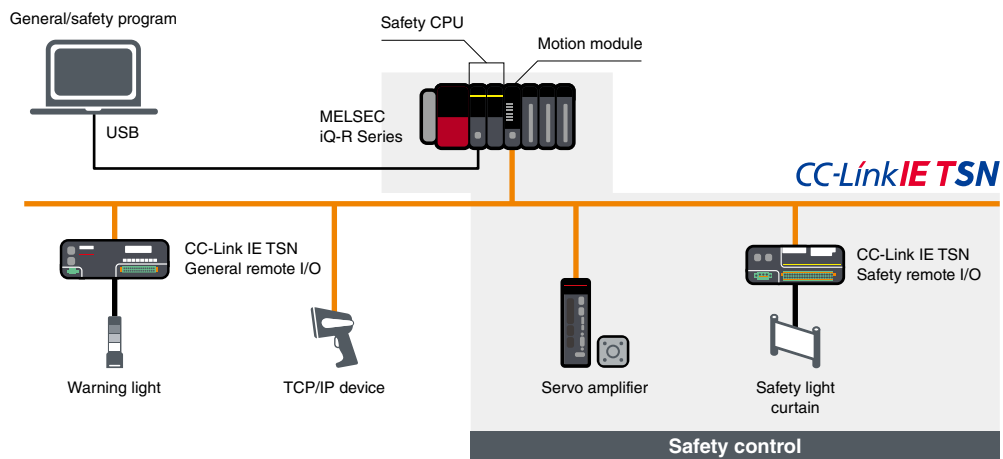


# MELSEC iQ-R Series

## iQ Platform-compatible PAC

The MELSEC iQ-R Series is equipped with a safety CPU that is compliant with ISO 13849-1 PL e and IEC 61508 SIL 3. The safety CPU can be installed directly on the MELSEC iQ-R Series base rack and can execute both safety and general programs.

### System configuration



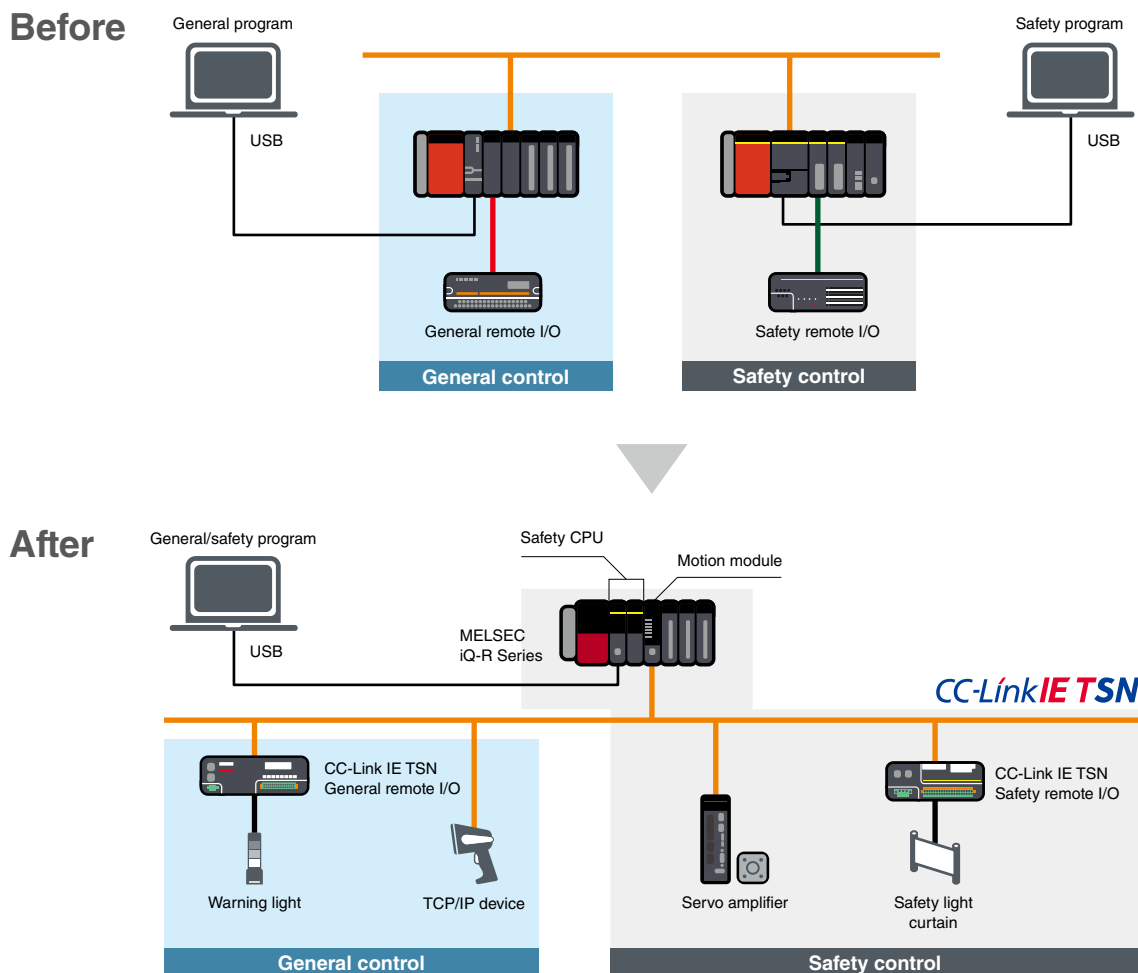
#### ■ CC-Link IE TSN features

- Use general Ethernet cables
- Mix general and safety communications on one network
- Combine with TCP/IP communications



## Integrated general and safety control

The MELSEC iQ-R Series safety programmable controller and CC-Link IE TSN can execute both safety and general programs, enabling easy integration into existing or new control systems, reducing costs and saving space.



## Specifications

### Safety CPU module specifications

LD : Ladder diagram    ST : Structured text    FBD : Function block diagram

Item	R08SFPCU-SET <sup>*1</sup>	R16SFPCU-SET <sup>*1</sup>	R32SFPCU-SET <sup>*1</sup>	R120SFPCU-SET <sup>*1</sup>
Category	Category 4 (EN ISO 13849-1)			
Safety Integrity Level (SIL)	SIL 3 (IEC 61508)			
Performance Level (PL)	PL e (EN ISO 13849-1)			
Control method	Stored program cyclic operation			
I/O control mode	Refresh mode (Direct access I/O is available by specifying direct access I/O (DX, DY).)			
Programming language	LD    ST <sup>*2</sup> FBD <sup>*2</sup>			
Extended programming language	Function block (FB), label programming (system/local/global)			
Program execution type	Fixed scan, initial <sup>*2</sup> , scan <sup>*2</sup> , interrupt <sup>*2</sup> , standby type <sup>*2</sup>			
Number of I/O points [X/Y]	4096	4096	4096	4096
Memory capacity				
Program capacity (step)	80K (40K for safety programs)	160K (40K for safety programs)	320K (40K for safety programs)	1200K (40K for safety programs)
Program memory (KB)	320	640	1280	4800
Device/label memory <sup>*3</sup> (KB)	1178	1710	2306	3370
Data memory (MB)	5	10	20	40
SLMP communication	●	●	●	●

<sup>\*1</sup>. Product package includes a safety CPU (R□SFPCU) and safety function module (R6SFM).

<sup>\*2</sup>. Not supported for safety control program.

<sup>\*3</sup>. An extended SRAM cassette expands the device/label memory area.

# Programmable Automation Controller

## Common engineering platform realizes efficient engineering

### ■ GX Works3

In GX Works3, general and safety programs are included in the same project folder. GX Works3 is highly adaptable to projects in different countries through its multiple language features.

#### General/safety shared labels

A general/safety shared label is used to pass device data from a safety program to a general program, and vice versa

**reset\_in**

**SAISD1240.0**

**Safety device**  
Append "SA" to the device name

**General control program (non-safety)**

- Scan
- MAIN
- ProgPou
- Local Label
- ProgramBody

**Safety control program**

- Fixed Scan
- MAIN1
- ProgPou1
- Local Label
- ProgramBody

**M\_SF\_ESTOP\_R\_01A\_2 (M+SF\_ESTOP\_R\_01A)**  
Emergency Stop

- Bi\_bActivate o\_bReady:B
- Bi\_bs\_EStopIn o\_bs\_EStop\_Out:B
- Bi\_bs\_StartReset o\_bError:B
- Bi\_bs\_AutoReset o\_wDiagCode:W
- Bi\_bReset

#### Safety FB\*\*

Safety FBs are units of ladder blocks repeatedly used in creating a safety program. Efficient engineering is realized, reducing programming errors

\*1. On the actual GX Works3 screen, FB version is shown.

### ■ Safety FB (Function blocks)

Functions that are frequently used for creating safety programs are provided as certified safety function blocks.

#### Safety FB list

FB name	Function	Description
M+SF_2HAND2_R	Two hand switch Type II	Provides the two-hand control functionality.
M+SF_2HAND3_R	Two hand switch Type III	Provides the two-hand control functionality. (Fixed specified time difference is 500 ms.)
M+SF_EDM_R	External device monitor	Controls a safety output and monitors controlled actuators, e.g. subsequent contractors.
M+SF_ENBSLW_R	Enable switch	Evaluates the signals of an enable switch with three positions.
M+SF_ESPE_R	Light Curtain (ESPE)	Safety-related FB for monitoring electro-sensitive protective equipment (ESPE).
M+SF_ESTOP_R	Emergency Stop	Safety-related FB for monitoring an emergency stop switch. This FB can be used for emergency switch off functionality (stop category 0).
M+SF_GLOCK_R	Guard Lock and Interlocking	Controls an entrance to a hazardous area via an interlocking guard with guard locking ("four state interlocking").
M+SF_GMON_R	Guard Monitoring	Monitors the relevant safety guard. There are two independent input parameters for two switches at the safety guard coupled with a time difference (Monitoring Time) for closing the guard.
M+SF_MODSEL_R	Mode Selector	Selects the system operation mode, such as manual, automatic, and semi-automatic, etc.
M+SF_OUTC_R	Output Control	Control of a safety output with a signal from the functional application and a safety signal with optional startup inhibits.
M+SF_MUTE2_R	Muting with 2 sensors	Muting is the intended suppression of the safety function. (e.g., light barriers) In this FB, parallel muting with two muting sensors is specified.
M+SF_MUTE2-2_R	Muting with 2 sensors 2	Muting is the intended suppression of the safety function. (e.g., light barriers) In this FB, parallel muting with two muting sensors is specified. The effective time of the muting control can be set to be unlimited.
M+SF_MUTEP_R	Parallel muting	Parallel muting with four muting sensors is specified.
M+SF_MUTEP-2_R	Parallel muting 2	In this FB, parallel muting with four muting sensors is specified. The effective time of the muting control can be set to be unlimited.
M+SF_MUTES_R	Sequential muting	Sequential muting with four muting sensors is specified.
M+SF_MUTES-2_R	Sequential muting 2	In this FB, sequential muting with four muting sensors is specified. The effective time of the muting control can be set to be unlimited.
M+SF_TSEN_R	Testable safety sensor	Detects, for example, the loss of the sensing unit detection capability, the response time exceeding that specified, and static ON signal in signal-channel sensors systems. It can be used for external testable safety sensors.
M+SF_EQUI_R	Double input (NC + NC or NO + NO)	Converts two equivalent bit inputs (both NO or NC) to one bit with discrepancy time monitoring. This FB output shows the result of the evaluation of both channels.
M+SF_ANTI_R	Double input (NO + NC)	Converts two antivalent*2 bit inputs (NO/NC pair) to one bit output with discrepancy time monitoring. This FB output shows the result of the evaluation of both channels.

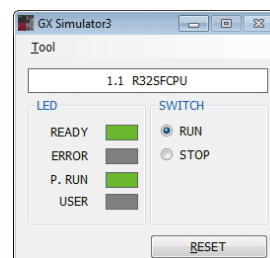
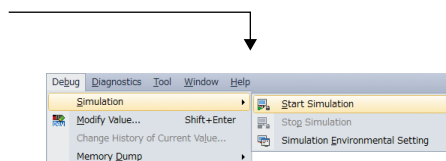
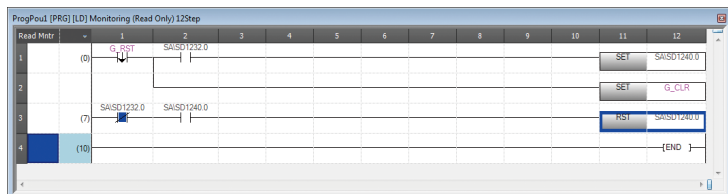
\*2. "Antivalent" means that during normal operation, the two inputs are in opposite states at the same time. This is sometimes called "complementary" or "non-equivalent".

## Integrated hardware simulator simplifying debugging

GX Works3 features an integrated simulator which helps to visualize the operation of the program during the debugging process.

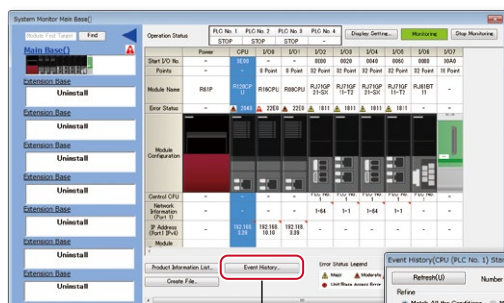
- Programs can be debugged with a virtual safety programmable controller on the computer
- No need for connecting to the CPU module

### Offline debugging without requiring a control CPU

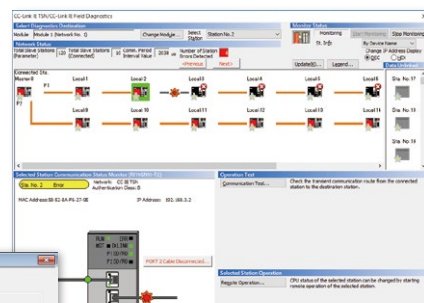


## Easier troubleshooting reducing downtime

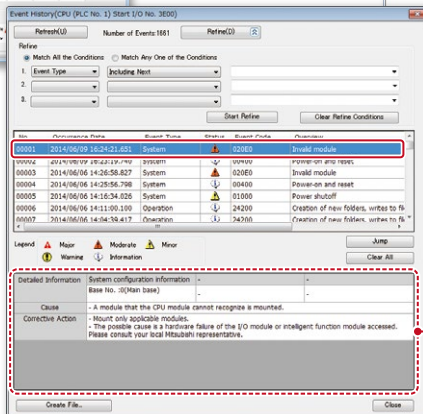
The MELSEC iQ-R Series includes various maintenance features:



System monitor



Diagnosis window



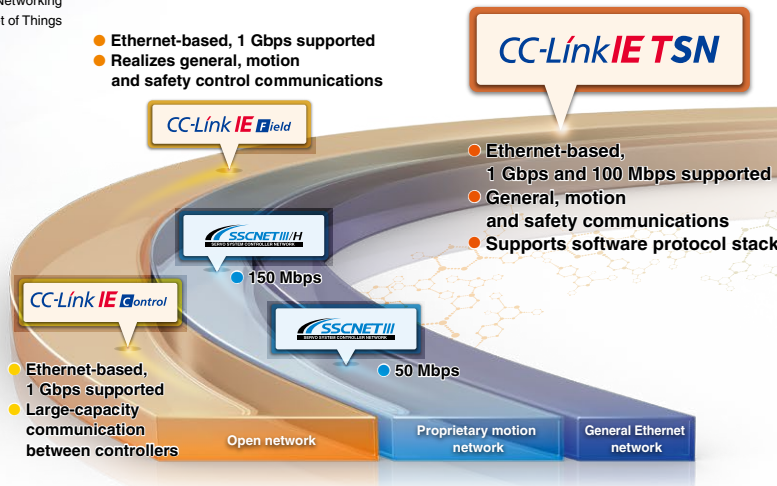
Event history

Detailed information including the cause and respective countermeasures are shown here

# Open integrated CC-Link IE TSN network across the manufacturing

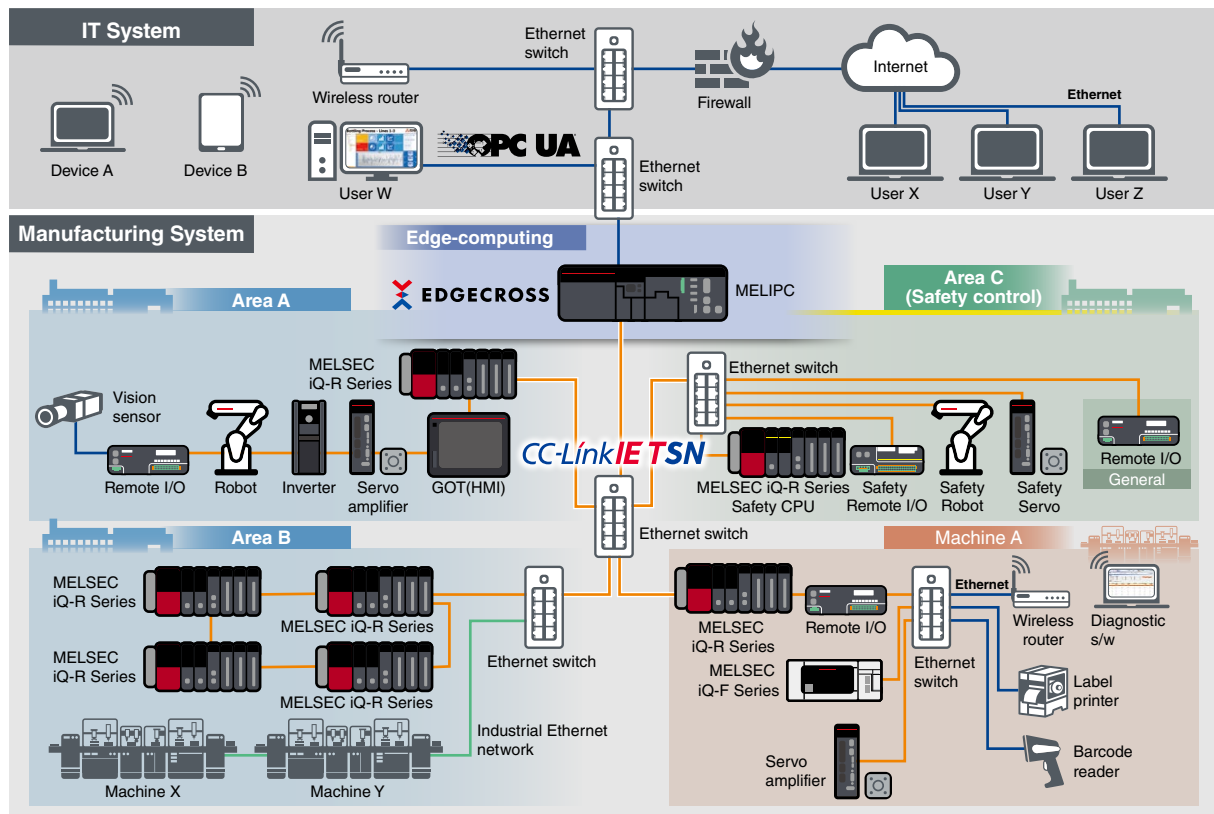
CC-Link IE TSN supports TCP/IP communications and applies it to industrial architectures through its support of TSN enabling real-time communications. With its flexible system architecture and extensive setup and troubleshooting features make CC-Link IE TSN ideal for building an IIoT infrastructure across the manufacturing enterprise.

\* TSN: Time Sensitive Networking  
 \* IIoT: Industrial Internet of Things



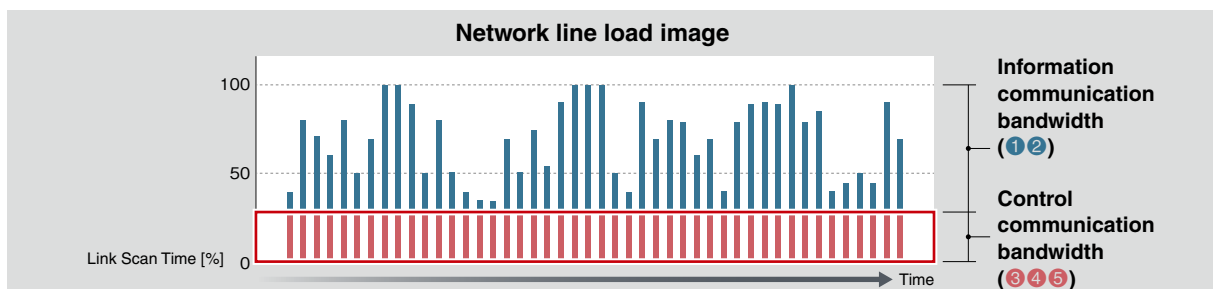
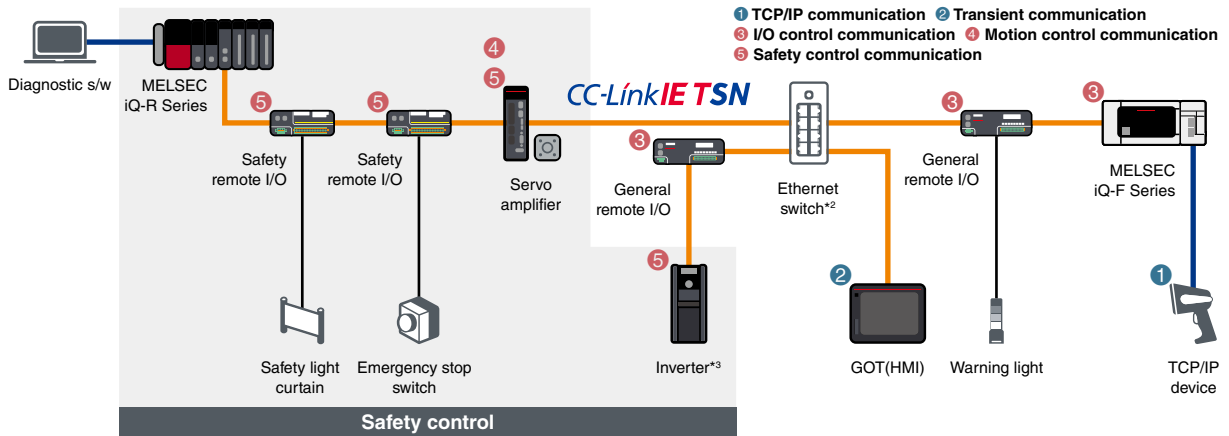
## Smart factory integration combining IT systems such as OPC UA with networked devices supporting other communication protocols

Build fully connected factory networks with vertical and horizontal integration across many different layers, automation control zones and network nodes. Realize system optimization on the same network while reducing overall network hardware and software costs.



## Deterministic control even if mixed with TCP/IP and safety communication

CC-Link IE TSN enables mixing of safety and non-safety communications.\*1 Safety monitoring functions such as (STO, SS1, SS2, SOS, SLS, SBC, SSM) are also supported for drive-control devices that are on the network. Deterministic performance of cyclic communication is maintained even when mixed with slower information data (non real-time). This enables TCP/IP communication devices to be used without affecting overall control.

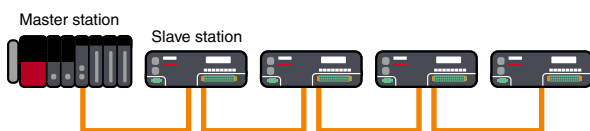


\*1. Some devices cannot be connected to CC-Link IE TSN depending on the system configuration  
 \*2. Class B switching hub supporting CC-Link IE TSN recommended by the CC-Link Partner Association  
 \*3. A device supporting 100 Mbps should be connected following the device supporting 1 Gbps (class B).

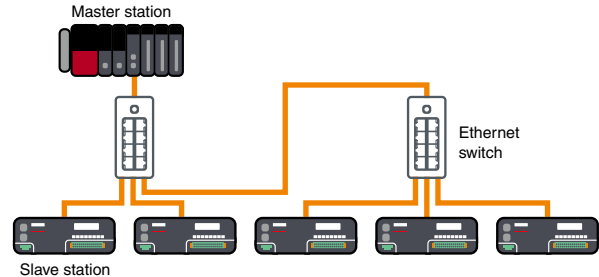
## Flexible system configuration with multiple topologies

Line, star, and ring topologies are supported, allowing a flexible system configuration. Use line topology for high-speed, high-performance control. This is realized when a system is configured with CC-Link IE TSN-compatible slave devices only without additional branch lines. Choose star topology if a more flexible system configuration is needed. Depending on Ethernet switch specifications, slave devices can be easily distributed to achieve the desired system configuration. Ring topology is ideal for systems requiring high reliability. Data communications can be maintained with normal stations even if a cable is disconnected or an error occurs in one of the slave stations.

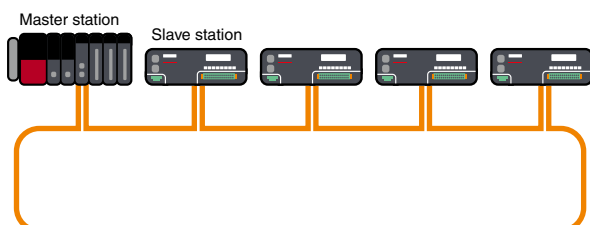
### Line topology



### Star topology



### Ring topology



# Safety Remote Modules

## Block type safety remote modules

Remote I/O modules that support safety functions of CC-Link IE TSN or CC-Link IE Field Network. These modules perform safety control when used together with MELSEC iQ-R Series Safety CPU.

## CC-Link IE TSN

### Safety input module

- Input module with safety functions
- Single or double wiring can be selected per input point
- Compliant with international safety standards, ISO 13849-1 (Category 4, PL e) and IEC 61508 (SIL 3)

Spring-clamp terminal block type

#### NZ2GNSS2-8D



Model	Input type DC input	Input points	Rated input voltage/current	Wiring type
NZ2GNSS2-8D	Negative common	Single wiring: 8 points Double wiring: 4 points	24 V DC (7.3 mA)	2-wire

### Safety output module

- Output module with safety functions
- Single or double wiring can be selected per output point
- Compliant with international safety standards, ISO 13849-1 (Category 4, PL e) and IEC 61508 (SIL 3)

Spring-clamp terminal block type

#### NZ2GNSS2-8TE



Model	Output type Transistor output	Output points	Rated load voltage/ Max. load current	Wiring type
NZ2GNSS2-8TE	Source + source type	Single wiring: 8 points Double wiring: 4 points	24 V DC (0.5 A)	2-wire

### Safety I/O module

- I/O combined module with safety functions
- Single or double wiring can be selected per input and output point
- Compliant with international safety standards, ISO 13849-1 (Category 4, PL e) and IEC 61508 (SIL 3)
- Embedded fast logic function enables control of safety logic from within the remote module. High-speed control (response speed: 5.8 ms\*1) is realized without being affected by the safety CPU or network

\*1. Depends on the parameter settings.

Spring-clamp terminal block type

#### NZ2GNSS2-16DTE



Model	Input type DC input	Input points	Rated input voltage/current	Output type Transistor output	Output points	Rated load voltage Max. load current	Wiring type
NZ2GNSS2-16DTE	Negative common	Single wiring: 8 points Double wiring: 4 points	24 V DC (7.3 mA)	Source + source type	Single wiring: 8 points Double wiring: 4 points	24 V DC (0.5 A)	2-wire

## Main safety input module

Spring-clamp terminal block type

### NZ2GFSS2-8D/NZ2GFSS2-32D

Model	Input type DC input	Input points	Rated input voltage/current	Wiring type	Extension module compatibility
NZ2GFSS2-8D	Negative common	Single wiring: 8 points Double wiring: 4 points	24 V DC (7 mA)	2-wire	●
NZ2GFSS2-32D	Negative common	Single wiring: 32 points Double wiring: 16 points	24 V DC (6 mA)	2-wire	●

## Main safety output module

Spring-clamp terminal block type

### NZ2GFSS2-8TE

Model	Output type Transistor output	Output points	Rated load voltage/ Max. load current	Wiring type	Extension module compatibility
NZ2GFSS2-8TE	Source + source type	Single wiring: 8 points Double wiring: 4 points	24 V DC (0.5 A)	2-wire	●

## Main safety I/O module

Spring-clamp terminal block type

### NZ2GFSS2-16DTE

Model	Input type DC input	Input points	Rated input voltage/current	Output type Transistor output	Output points	Rated load voltage/ Max. load current	Wiring type	Extension module compatibility
NZ2GFSS2-16DTE	Negative common	Single wiring: 8 points Double wiring: 4 points	24 V DC (7 mA)	Source + source type	Single wiring: 8 points Double wiring: 4 points	24 V DC (0.5 A)	2-wire	●

## Extension safety output module

Spring-clamp terminal block type

### NZ2EXSS2-8TE

Model	Output type Transistor output	Output points	Rated load voltage/ Max. load current	Wiring type
NZ2EXSS2-8TE**1	Source + source type	Single wiring: 8 points Double wiring: 4 points	24 V DC (0.5 A)	2-wire

\*1. Use in combination with NZ2GFSS2-32D.

## Waterproof/dustproof type (IP67) safety I/O module

Waterproof connector

### NZ2GFS12A2-14DT

### NZ2GFS12A2-16DTE

Model	Input type DC input	Input points	Rated input voltage/current	Output type Transistor output	Output points	Rated load voltage/ Max. load current	Wiring type
NZ2GFS12A2-14DT	Negative common	Single wiring: 12 points Double wiring: 6 points	24 V DC (6 mA)	Source + sink type	Single wiring: not possible Double wiring: 2 points	24 V DC (2.0 A)	2-wire
NZ2GFS12A2-16DTE	Negative common	Single wiring: 12 points Double wiring: 6 points	24 V DC (6 mA)	Source + source type	Single wiring: 4 points Double wiring: 2 points	24 V DC (1.0 A)	2-wire

General specifications and product guarantee conditions for co-branded products may vary from those of MELSEC products.

## Higher level of safety in coordination with AC servo MELSERVO-J5 Series

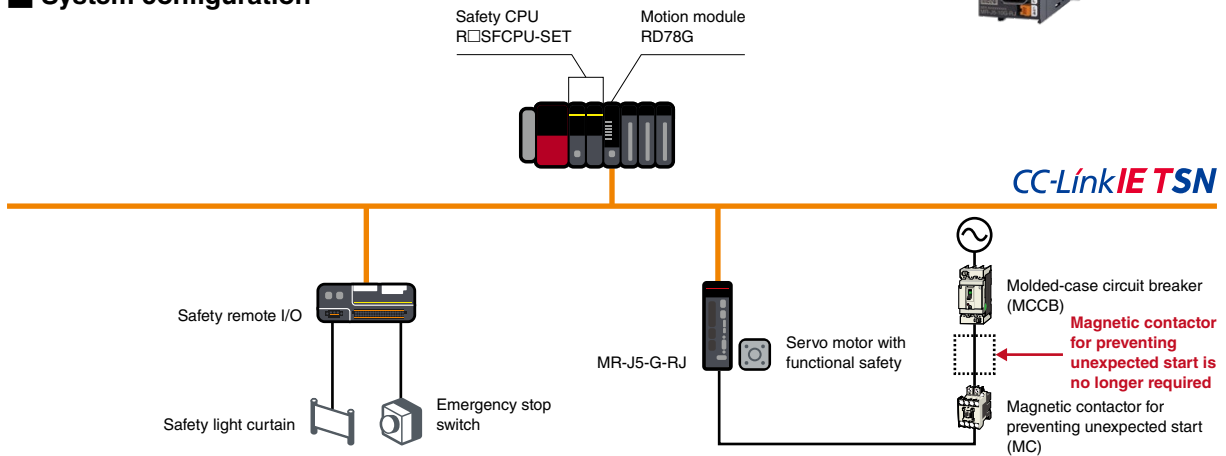
The MR-J5-G-RJ supports CC-Link IE TSN safety communication function as standard. Safety sub-functions are used by combining the safety CPU R□SFCPU-SET with the motion module RD78G/RD78GH. Safety sub-functions of the servo amplifier can be controlled using safety signals of the safety remote I/O connected with CC-Link IE TSN without connecting with the servo amplifier, allowing safety system configuration with reduced wiring.

### ■ AC servo MELSERVO-J5 Series

- CC-Link IE TSN (1 Gbps) and safety control part are embedded as standard
- The servo motor HK-KT\_WS/HK-ST\_WS supporting functional safety complies with SIL 3 safety level
- Provide 10 safety sub-functions complying with IEC 61800-5-2 as SIL 2 or SIL 3 compliant safety level

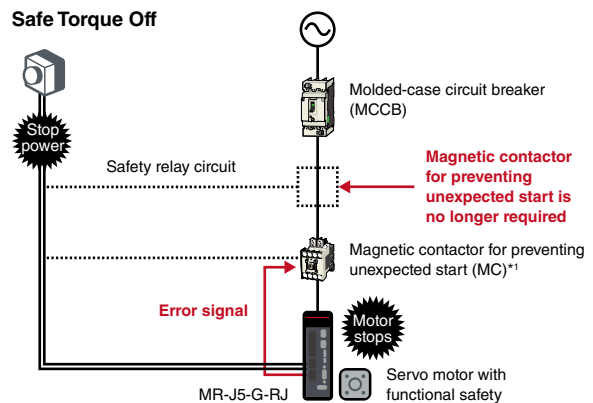


### ■ System configuration



### ■ Support functional safety of IEC/EN 61800-5-2

- Safe torque off (STO) is the function categorized as stop category 0 of IEC 60204-1 that corresponds to an immediate removal of power to a motor
- In addition to rotary motors, direct drives and linear servo motors are available with safety sub-functions



### Safety level combinations\*2

Servo amplifier		MR-J5-G-RJ			
		Servo motor with functional safety (HK-KT_WS/HK-ST_WS)		Rotary servo motor (HK Series) linear servo motor (LM Series) direct drive motor (TM Series)	
Servo motor		Cat. 4 PL e, SIL 3	Cat. 3 PL d, SIL 2	Cat. 4 PL e, SIL 3	Cat. 3 PL d, SIL 2
Functional safety category (ISO 13849-1, IEC 62061)					
STO	Safe torque off	●	-	●	-
SS1-t	Safe stop 1, time controlled	●	-	●	-
SS1-r*3	Safe stop 1, ramp monitored	●	-	-	●
SS2-t*3	Safe stop 2, time controlled	●	-	-	-
SS2-r*3	Safe stop 2, ramp monitored	●	-	-	-
SOS*3	Safe operating stop	●	-	-	-
SBC	Safe brake control	●	-	●	-
SLS*3	Safely-limited speed	●	-	-	●
SSM*3	Safe speed monitor	●	-	-	●
SDI*3	Safe direction	●	-	-	●
SLI*3	Safely-limited increment	●	-	-	-
SLT	Safely-limited torque	-	●	-	●

\*1. Magnetic contactors are not required to meet the STO requirements. However, this illustration recommends the use of a magnetic contactor which shuts off the main circuit power supply of the servo amplifier at an alarm occurrence.

\*2. For detailed information, please refer to the "Mitsubishi Electric AC Servo System MELSERVO-J5 Catalog (L(NA) 03179ENG)".

\*3. A fully closed loop system does not support SS1-r, SS2, SOS, SLS, SSM, SDI, and SLI.



## Coordination with FREQROL-E800 Series inverter ensures safety and productivity

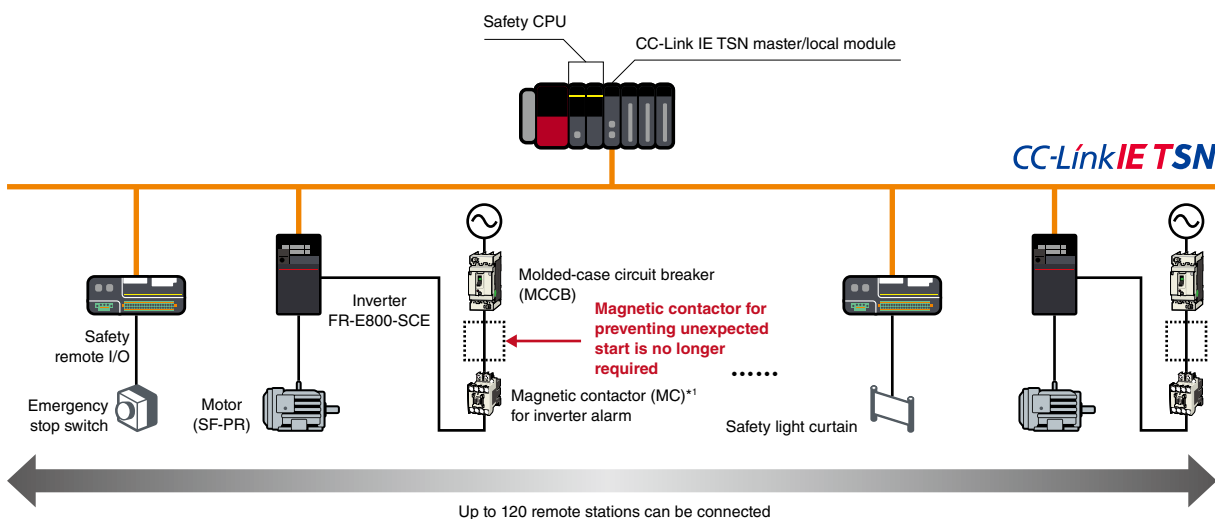
FR-E800-SCE is provided with safety functions as standard. The inverter supporting safety communication eliminates the needs for preparing separate safety communication devices or complex wiring, realizing a simple safety system.

### ■ Inverter FREQROL-E800 Series

- CC-Link IE TSN (100 Mbps) and safety control part are embedded as standard
- Efficient protocol enables real-time collection of shop floor data
- Enables mixing of real-time control communication and TCP/IP communication



### ■ System configuration



### ■ Expanded functional safety realizing collaboration of operators and machines

- Compliant with the functional safety standard (IEC 61508, SIL 3), reducing implementation cost for a safety certificate
- Compliant with safety sub-functions (IEC 61800-5-2) such as STO (Safe torque off) and SLS (Safely-limited speed), contributing to operation ensuring operator's safety

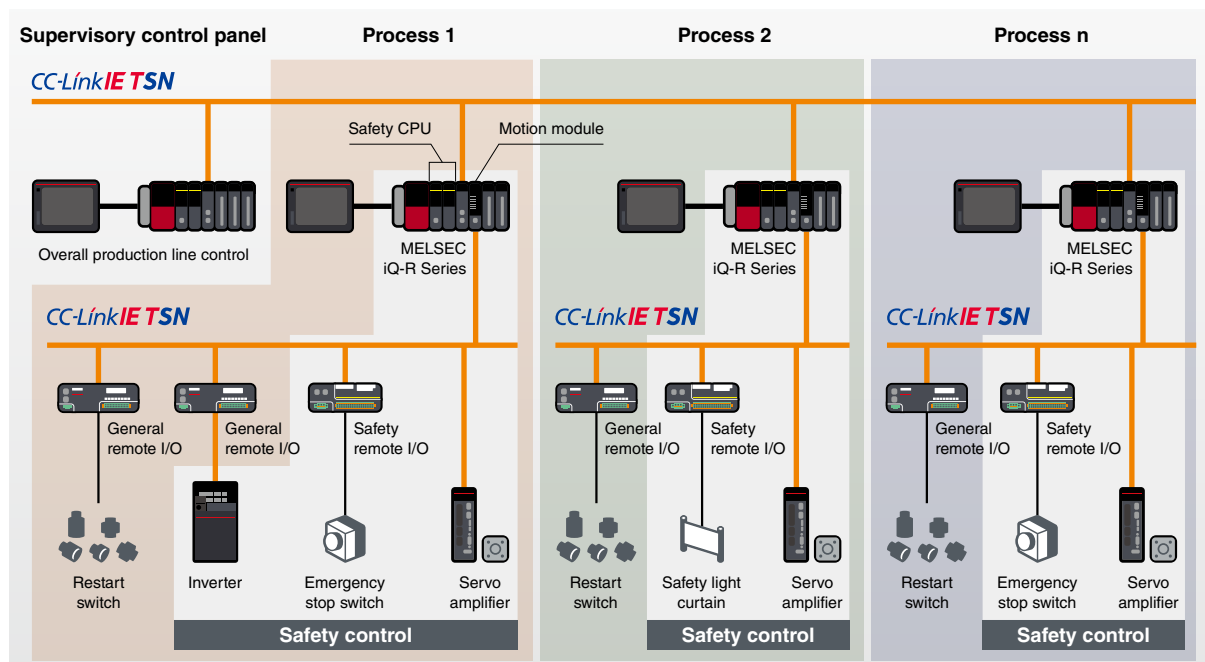
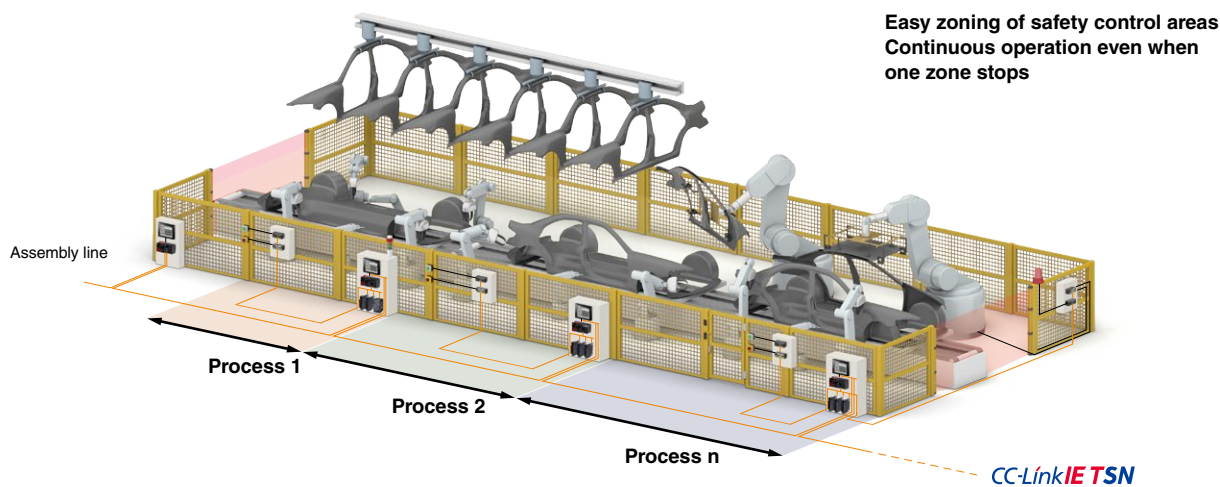
		FR-E800-SCE
Functional safety category (ISO 13849-1, IEC 62061)		SIL 3, PL e, Cat.3
STO	Safe torque off, free-run stop	●
SS1	Safe stop 1, ramp monitored	●
SLS	Safely-limited speed	●
SBC	Safe brake control	●
SSM	Safe speed monitor	●

\*1. A magnetic contactor is not required when STO function is used. However, in this system configuration, one magnetic contactor is used to shut off the power at alarm occurrence.

## Application example

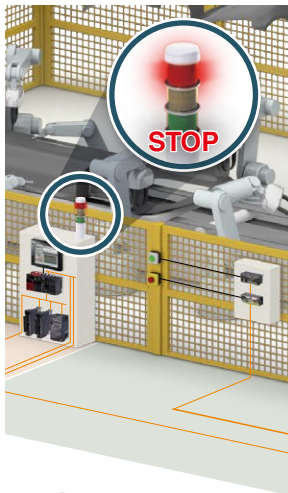
### ■ Automotive assembly line

Ensures safety on a large-scale production line and distributed system such as an automotive assembly line with multiple welding robots operating. In systems with multiple stations and safety controllers, critical safety data is shared over the network which allows an emergency stop signal to be sent to the stations before and after within the production line. The safety CPU is connected using the CC-Link IE TSN with safety communication integrated into the network protocol. Also, the motion module supports safety communication with the AC servo via CC-Link IE TSN. General and safety devices, and drives can be connected together with one CC-Link IE TSN (up to 120 devices in total), realizing a reduced wiring and highly scalable system, lowering total cost of ownership (TCO).



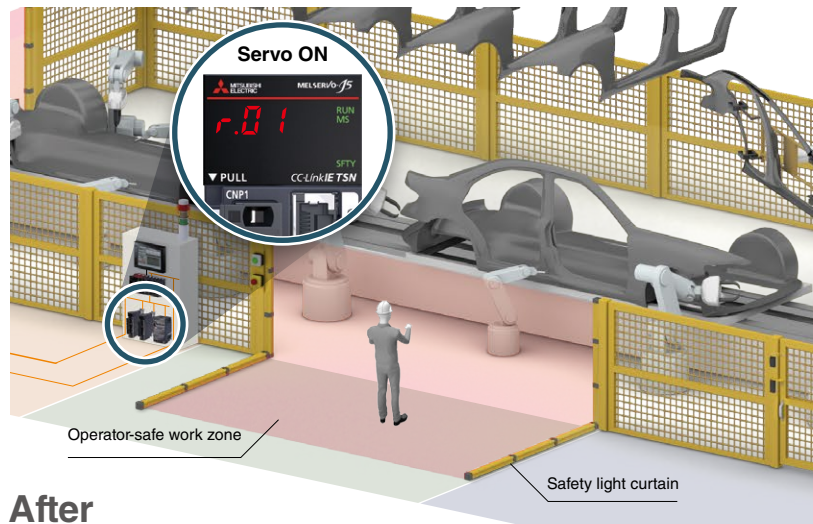
## Smooth production restart by utilizing Safe Stop 2 (SS2) and Safe Operating Stop (SOS) functions

An operator-safe work zone is ensured by providing an exclusion fence around the production robots or stopping the production line when activating the STO Safe Torque Off function (shuts off power to the servo motors responding to the input signal from a safety light curtain or switch). With MELSERVO-J5 series, the zone can be ensured by utilizing SS2 and SOS functions that enable the production line to stop while power to the servo motors is kept supplied, enabling a smooth production restart and ensuring improved productivity without compromising safety.



### Before

- Production is stopped when STO is activated
- Restart requires more time

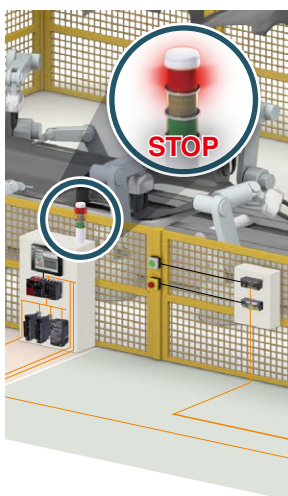


### After

- Production is brought to a safe stop (while power to the servo motors is kept supplied)
- Reduction in production restart time

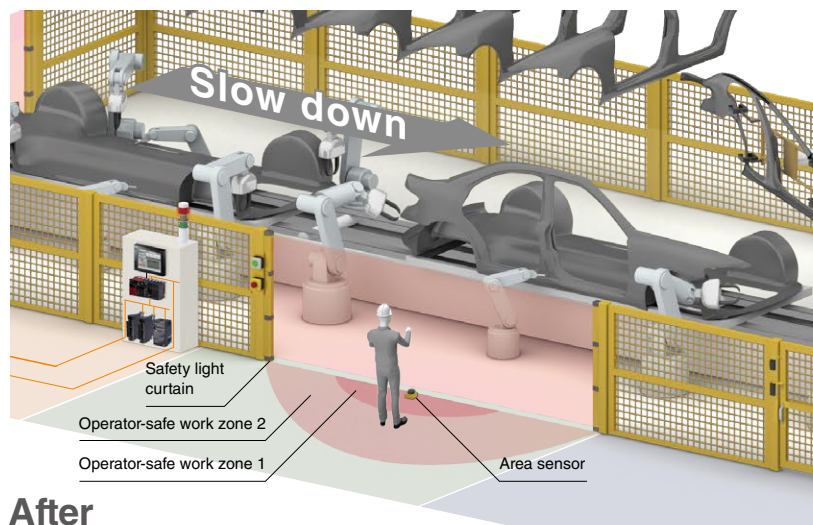
## Maintenance while continuously operating machines with Safety-Limited Speed (SLS function)

Utilizing the STO safe torque off function, safety of an operator-safe work zone is ensured by enabling the control system to be brought to a safe stop. Safety total solution with the FR-E800-SCE inverter, Safety-Limited Speed (SLS function) enables continuous operation with the set frequency without stopping machines when an operator enters the operator-safe work zone.



### Before

- Production is stopped when STO is activated



### After

- Operation with reduced speed by Safety-Limited Speed



# Safety Controller MELSEC-WS Series

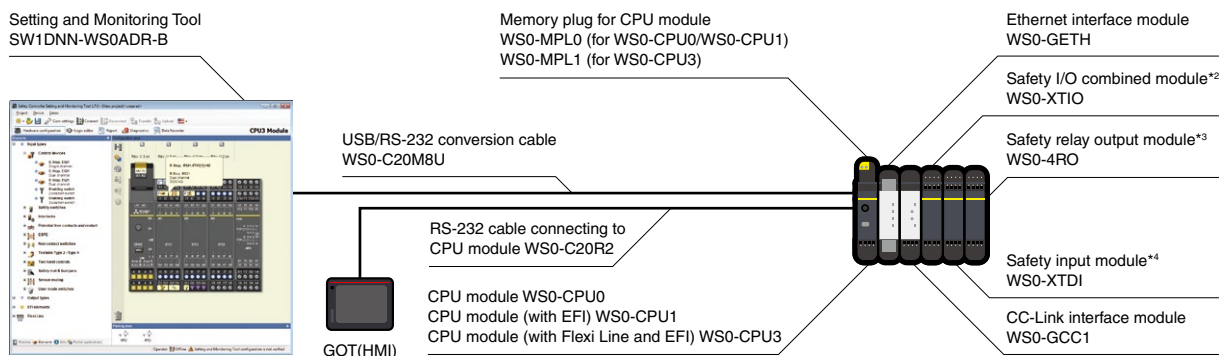
Powered by  
**SICK**

The MELSEC-WS Series was developed and manufactured by SICK AG. Sick is a German supplier of safety solutions. For more information, please refer to the relevant product manuals or contact your local Mitsubishi Electric sales office or representative.

This compact safety controller complies with EN ISO 13849-1 Category 4/PL e and IEC 61508 SIL 3 safety standards. It is ideal for small to medium-scale safety control system. Safety I/O points can be extended to 144 points per CPU module according to the system configuration. Utilizing the dedicated Setting and Monitoring Tool\*<sup>1</sup>, setup and logic creation can be easily done.

\*1. For details on how to obtain the tool, please contact your local Mitsubishi Electric sales office or representative.

## System configuration



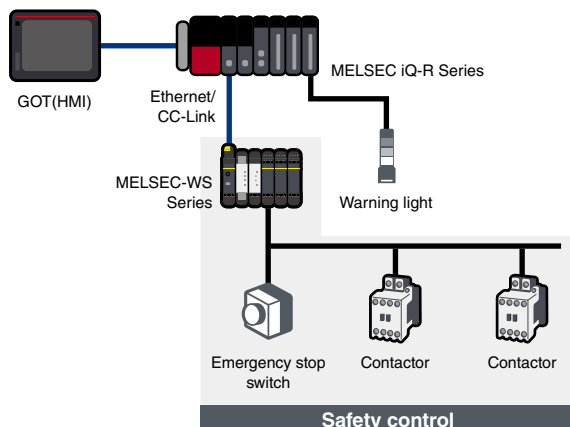
\*2. No. of input points: 8 points (single wiring), No. of output points: 4 points (single wiring)

\*3. Safety relay output: 4 points

\*4. No. of input points: 8 points (single wiring)

## Safety control can be easily added to existing programmable controllers (CC-Link/Ethernet)

Connecting the safety controller to CC-Link, safety control can be performed with the existing MELSEC iQ-R/Q/L Series module. Furthermore, operation status and error status of the safety controller can be monitored with the programmable controller. This helps quickly identifying the factor of emergency stop and faulty equipment.

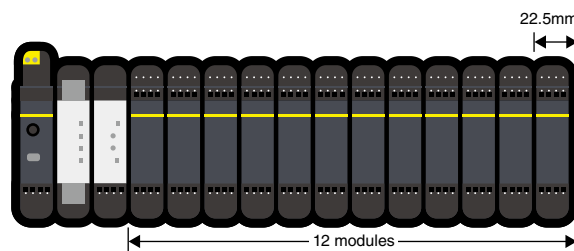


### Applicable functions with network interface

	CC-Link (WS0-GCC1)	Ethernet (WS0-GETH)
PLC/PC		
Monitoring information	●	●
Notification data	●	●
Setting and Monitoring tool		
Connection via network	-	●

## Flexible extensibility

- Up to 12 safety input and I/O modules, 4 safety relay output modules, and 2 network modules can be installed
- I/O points can be extended to 144 points (single input). Safety input: 96 points (single input) and safety output: 48 points (single output)

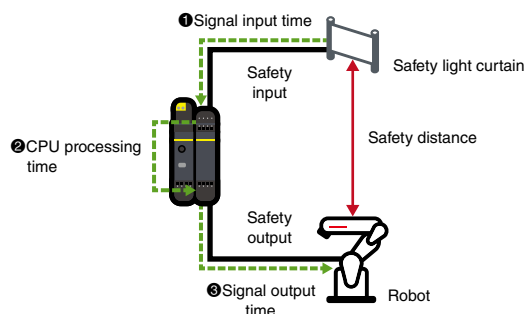


## Fast shut off function realizes a response time of 8 ms

Fast shut off function that enables the safety I/O module to shut off safety output without going through the CPU module realizes a response time of 8 ms. Since similar response time is achieved even with increased I/O points, the safety distance can be shortened even in the large-scale safety system.

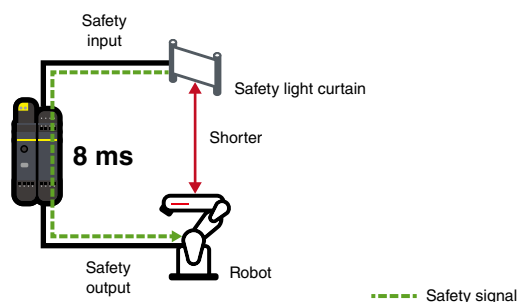
### Fast shut off function is not used

Response time = ① + ② + ③



### Fast shut off function is used

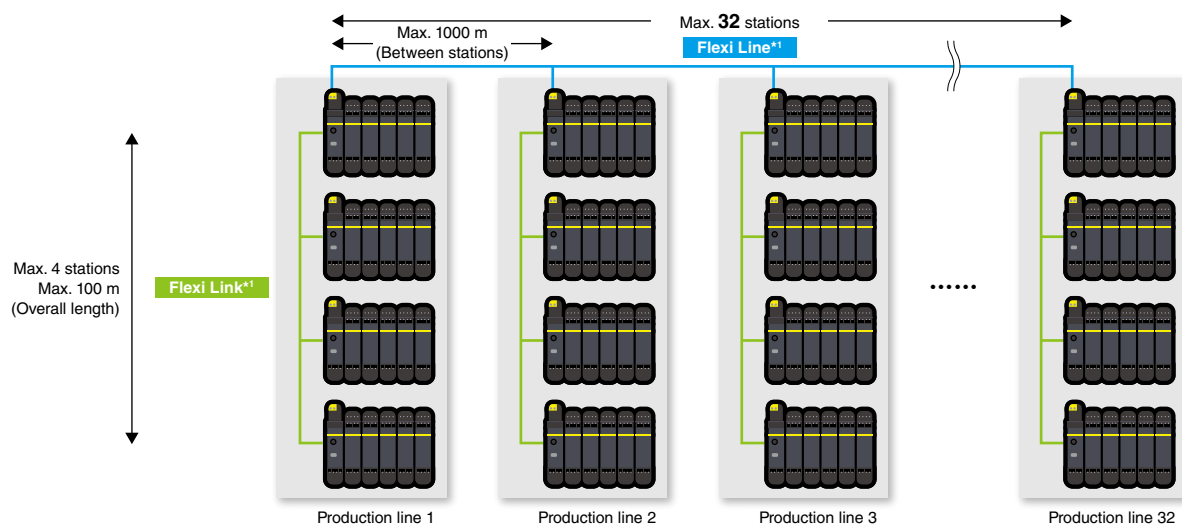
Response time = 8 ms



## Flexi Line/Flexi Link

### Safety communication network between safety controllers

Safety communications between safety controllers can be easily established at a low cost just by connecting the CPU modules with dedicated cables. Safety communication is realized without a dedicated network module, allowing utilization in various production site. In addition, coordination between multiple devices is possible, improving production system safety.



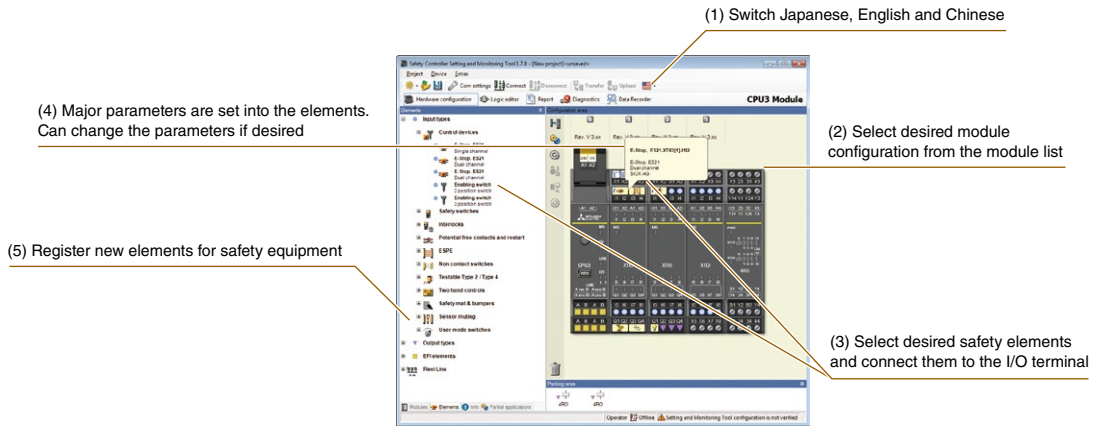
\*1. Flexi Line is supported by WS0-CPU3 only and Flexi Link is supported by WS0-CPU1 and WS0-CPU3 only.

# Safety Controller

## Dedicated "Setting and Monitoring Tool\*1" provides intuitive system configuration environment

### ■ Configuration

Hardware configuration can be easily and quickly done using a wide range of elements\*2.

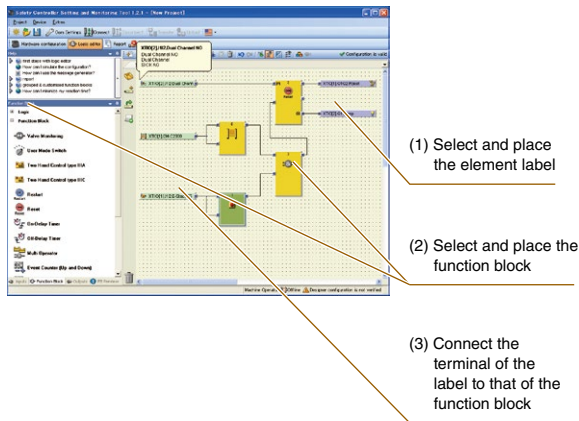


\*1. For details on how to obtain the tool, please contact your local Mitsubishi Electric sales office or representative.

\*2. Connecting parameters of major safety equipment, such as emergency stop switches, safety door switches and safety light curtains, are expressed by an icon. Make settings simply by drag-and-drop decision. Elements for Safety devices of Mitsubishi's partners are also available. Please contact your local Mitsubishi representative.

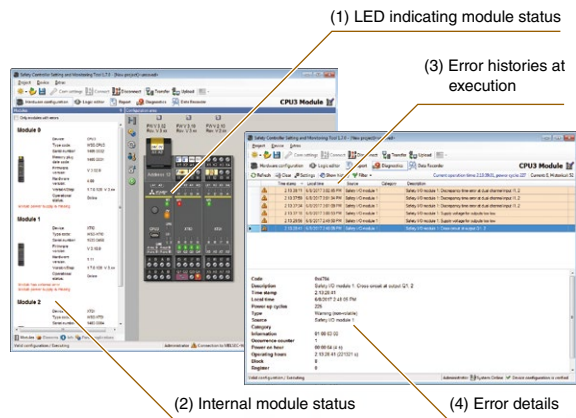
### ■ Logic Editor

Elements connected to the I/O terminal are automatically labeled, enabling logic creation easier using labels and function blocks.



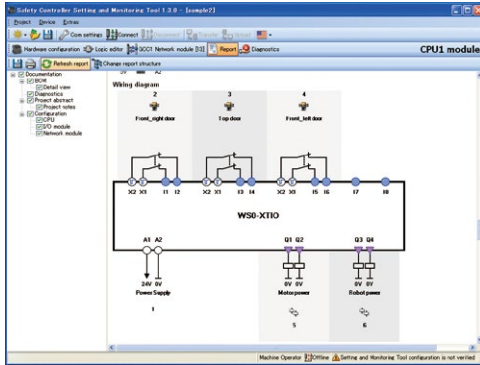
### ■ Diagnosis/monitor

Monitoring of the internal status of modules and error histories is possible.



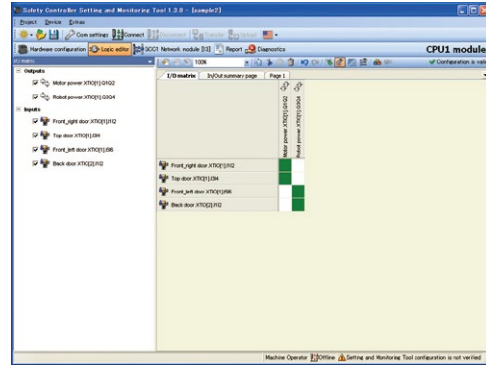
## ■ Report

The wiring diagram for I/O modules can be automatically created. Report such as error diagnosis can be created, printed, and saved as PDF.



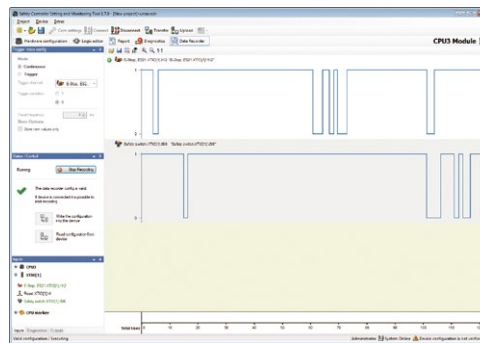
## ■ I/O matrix

The relation of inputs and outputs can be displayed as a matrix.



## ■ Data recorder

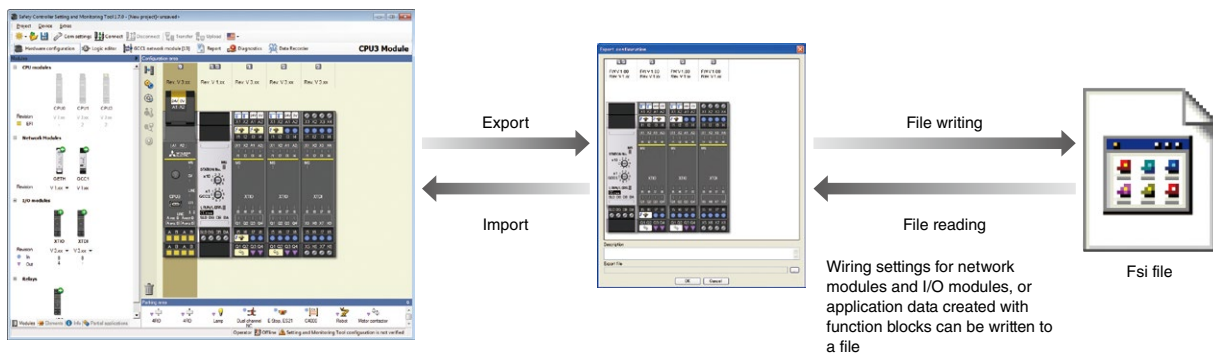
ON/OFF status of safety input signal and safety output signal processed by the safety controller can be stored.\*1 Results recorded on the Setting and Monitoring Tool can also be viewed on the computer to utilize for troubleshooting.



\*1. Available when a CPU module with firmware version of V2.01 (revision 2.XX) or later and a Setting and Monitoring Tool of V1.7.0 or later are used together.

## ■ Import and export of logic

The connection settings to the I/O modules or application logic created with function blocks can be stored in a single setting file, and data can be read out of stored setting files.

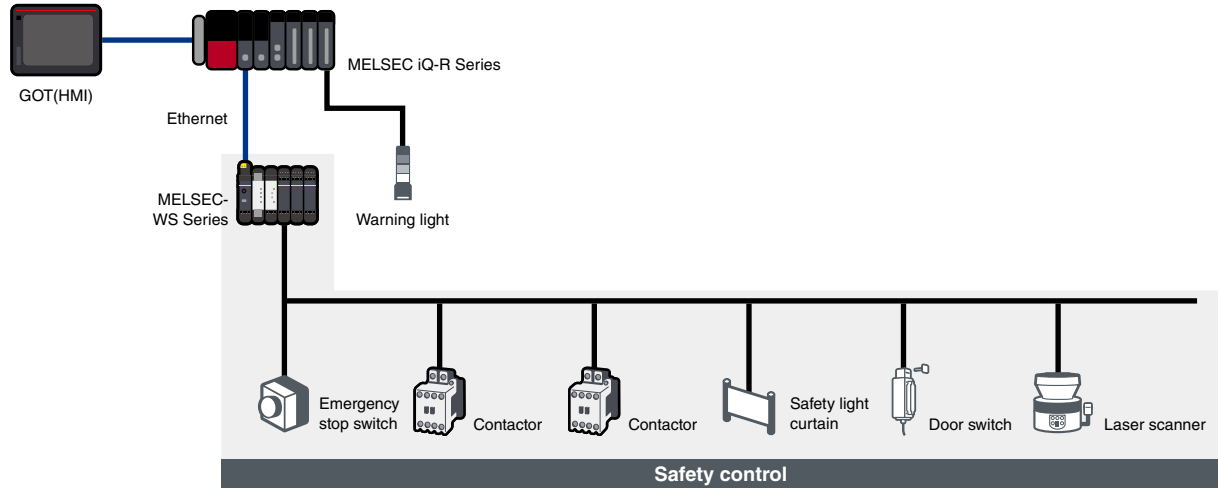
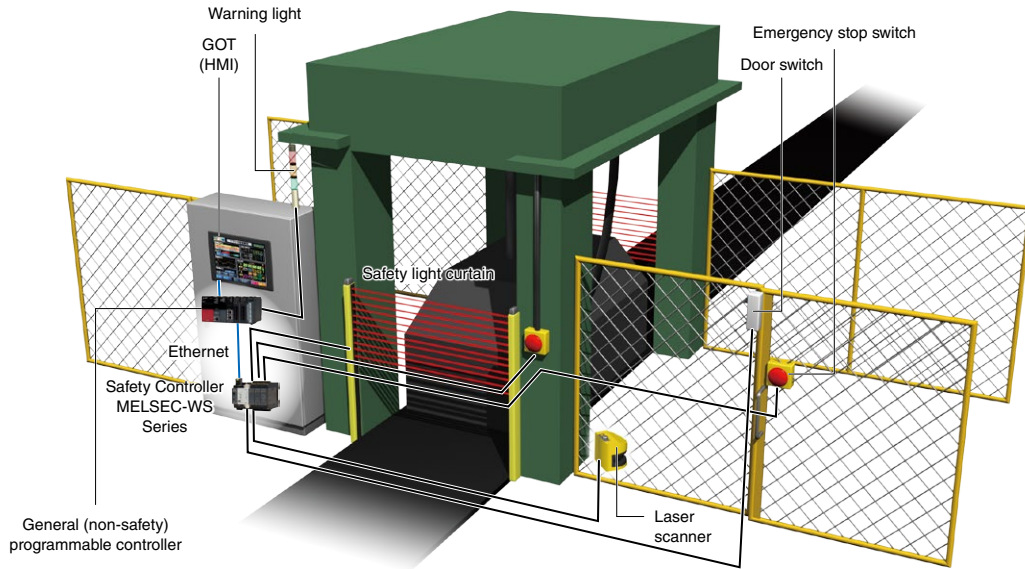


# Safety Controller

## Application example

### ■ Press machine

The MELSEC-WS Series secures safety of standalone devices such as press machine. The MELSEC-WS Series are compact controllers with flexible features such as extendable I/Os, safety communication between CPUs, communication with a general programmable controller, and fast shut off function realizing faster response times.





## Specifications

### CPU module specifications

Item	WS0-CPU0	WS0-CPU1	WS0-CPU3
Category	Category 4 (EN ISO 13849-1)		
Safety Integrity Level (SIL)	SIL 3 (IEC 61508)		
Performance Level (PL)	PL e (EN ISO 13849-1)		
PFHd (probability of a dangerous failure per hour)	1.07 x 10 <sup>-9</sup>	1.69 x 10 <sup>-9</sup>	
Degree of protection (EN/IEC 60529)	Terminals: IP20, Housing: IP40		
EMC	EN 61000-6-2, EN 55011 (class A)		
Protection class	3		
Number of EFI interfaces	0	2	
Number of Flexi Line interfaces	0		2
Configuration interface	RS-232		RS-232, USB
Weight (kg)	0.11	0.12	0.13
External dimensions (H x W x D, mm)	96.5 x 22.5 x 120.8		101.7 x 22.5 x 120.8

### CC-Link interface module specifications

Item	WS0-GCC1
Station type	Remote device station
CC-Link version	Ver.1.10
Number of stations occupied	1...4
Max. number of connectable modules	Max. 64 stations (number of stations connectable to one master station)
Connection cable	Ver.1.10 compatible CC-Link dedicated cable
Degree of protection (EN/IEC 60529)	Terminals: IP20, Housing: IP40
External dimensions (H x W x D, mm)	96.5 x 22.5 x 120.8

### Ethernet interface module specifications

Item	WS0-GETH
Network type	Ethernet (TCP/IP) 100Base-TX 10Base-T
Number of connections	Max. 4 connections + 1 connection (for Setting and Monitoring Tool only)
Degree of protection (EN/IEC 60529)	Terminals: IP20, Housing: IP40
External dimensions (H x W x D, mm)	96.5 x 22.5 x 120.8

### Safety input and I/O combined modules specifications

Item	WS0-XTIO	WS0-XTDI
Category	Category 4*1 (EN ISO 13849-1)	Category 4 (EN ISO 13849-1)
Safety Integrity Level (SIL)	SIL 3 (IEC 61508)	
Performance Level (PL)	PL e (EN ISO 13849-1)	
PFHd	0.9 x 10 <sup>-9</sup> (for dual channel outputs) 4.8 x 10 <sup>-9</sup> (for single channel outputs)	0.4 x 10 <sup>-9</sup>
Degree of protection (EN/IEC 60529)	Terminals: IP20, Housing: IP40	
EMC	EN 61000-6-2, EN 55011 (class A)	
Protection class	3	
Weight (kg)	0.16	0.14
Number of input points	8 (single), 4 (double)	
Number of output points	4 (single), 2 (double)	-
External dimensions (H x W x D, mm)	106.5 x 22.5 x 120.8	

\*1. It depends on the connection and setting methods with safety output devices. Please refer to the manual for the details.

### Safety relay output module specifications

Item	WS0-4RO	
Category	Category 4 (EN ISO 13849-1)	
Safety Integrity Level (SIL)	SIL 3 (IEC 61508)	
PFHd	1.2 x 10 <sup>-9</sup> (I = 0.75 A, switching frequency = 1/h)*2	
Degree of protection (EN/IEC 60529)	Terminals: IP20, Housing: IP40	
EMC	EN 61131-2, EN 61000-6-2, EN 55011 (class A)	
Weight (kg)	0.19	
Output circuit specs (13-14, 23-24, 33-34, 43-44)		
Number of NO contacts	2 (double output)	
Output circuit specs (Y1-Y2, Y3-Y4)		
Number of NC contacts	2	
Output circuit specs (Y14, Y24)		
Number of NO contacts	2	
External dimensions (H x W x D, mm)	106.5 x 22.5 x 120.8	

\*2. It depends on output current or other output values. Please refer to the manual for the details.



# Safety Extension Module

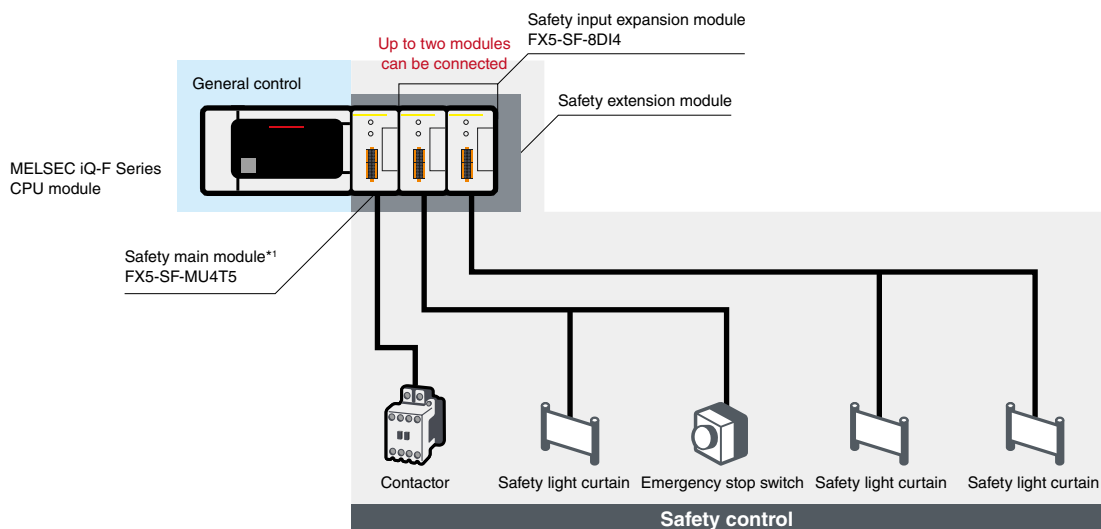
## MELSEC iQ-F Series

Powered by  
**SICK**

The MELSEC iQ-F Series safety extension module was developed and manufactured by SICK AG. SICK is a German supplier of safety solutions. For more information, please refer to the relevant product manuals or contact your local Mitsubishi Electric sales office or representative.

The MELSEC iQ-F Series safety extension module is compliant with international safety standards EN ISO 13849-1 Category 4 PL e and IEC 61508 SIL 3. Safety control of a small sized equipment is easily realized with easier settings without a program. Just connecting with the CPU module executes safety control, enabling both general and safety control in one system.

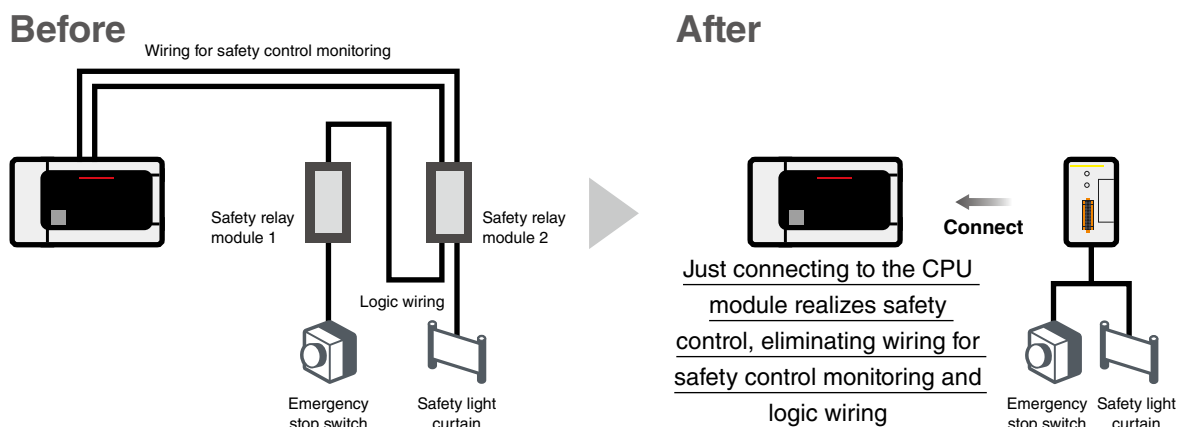
### System configuration



\*1. Up to one safety main module can be connected. The extension module for general control cannot be connected following the safety extension module.

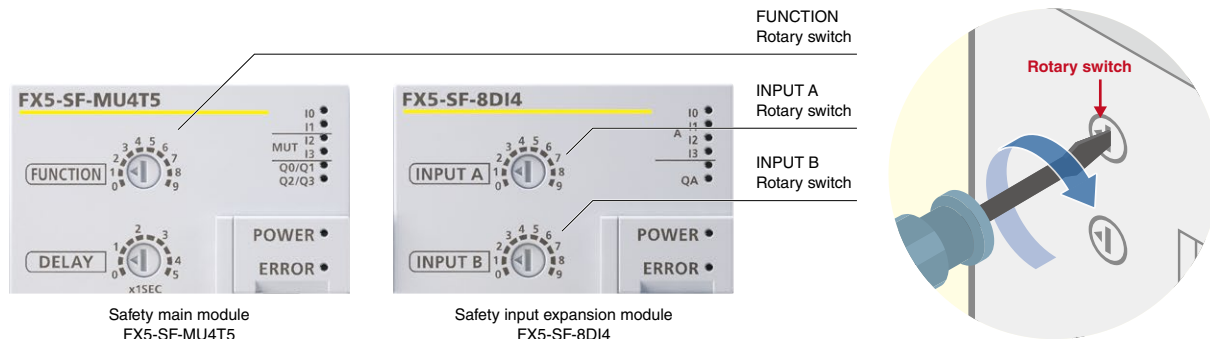
### Realizes safety control with less wiring and minimal space

The safety control system can be configured by connecting the safety extension modules with the CPU module. Wiring for safety control monitoring and logic wiring between safety relays are no longer required, reducing wiring cost and space.



## Turn the rotary switch to select a built-in program

Each safety extension module has nine different programs installed. The safety control system can be configured by just selecting a program with the rotary switch on the front. It is no longer necessary to create a control program for safety control.

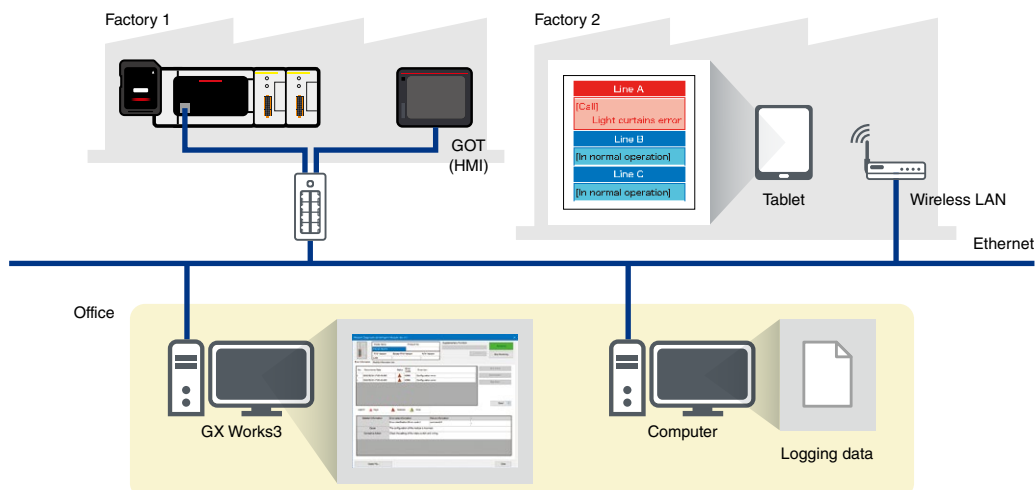


### Program list

Program	Safety main module FX5-SF-MU4T5	Safety input expansion module FX5-SF-8DI4
0		Inactive
1	OR control (1)	AND link (single channel)
2	OR control (2)	AND link (dual channel) (1)
3	Muting control	AND link (dual channel) (2)
4	Two-hand control (1)	AND link (dual channel) (3)
5	Two-hand control (2)	AND link (dual channel) (4)
6	AND control (1)	AND link (dual channel) (5)
7	AND control (2)	OR link (dual channel)
8	Independent control	Bypass
9	AND control (3)	All paths batch connection

## Interconnectivity with external devices visualizes the equipment status

Information can be shared on the factory floor through interconnectivity between devices utilizing built-in function of the FX5U/FX5UC CPU modules and a GOT (HMI). Additionally, the safety status of equipment can be monitored (including error monitoring and information collection) via network from an office or other remote locations.

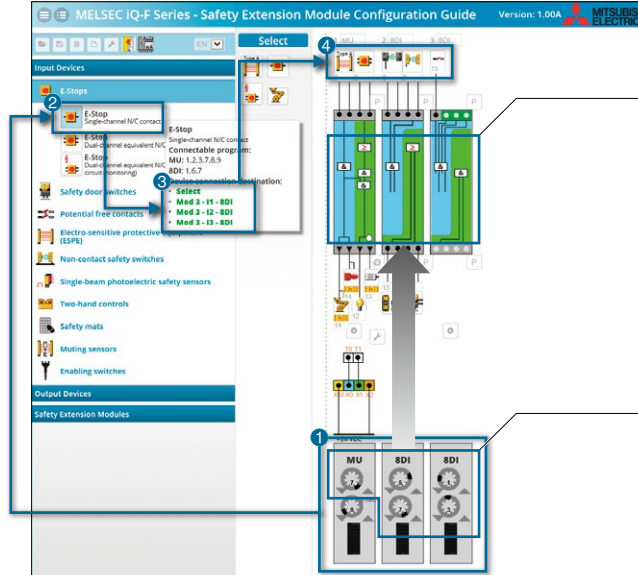


# Safety Extension Module

## Check the wiring with Safety Extension Module Configuration Guide

The MELSEC iQ-F Series Safety Extension Module Configuration Guide\*1 is a useful tool to check the system configuration, settings, and wiring of the safety extension module. Connected terminals of I/O devices, wiring diagram, and rotary switch setting change can be checked and also the created wiring diagram can be printed.

- 1 Place the safety extension module.
- 2 Click the device to connect.
- 3 Select the connection destination.
- 4 The set device is applied to the configuration.



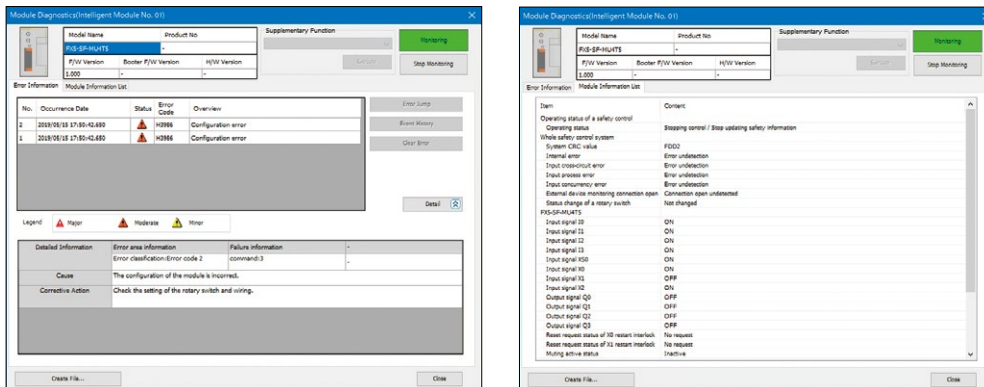
The displayed program outline changes to match the selected program number.

Set the program number with the rotary switch.

\*1. For details on how to obtain the tool, please contact your local Mitsubishi Electric sales office or representative.

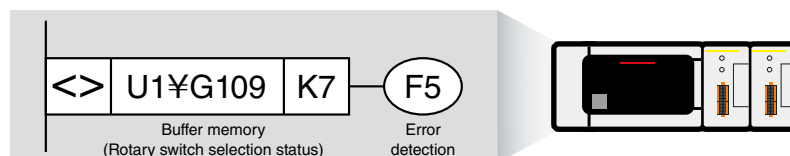
## Module diagnostics with GX Works3

Safety extension module information such as its I/O, settings, and error codes is stored in the buffer memory in the safety main module. The error history can be recorded up to 16 items. When an error occurs, information such as the error details or countermeasures can be checked from the module diagnosis function of GX Works3, making troubleshooting easier.



Settings and I/O status of the safety devices can be checked from the buffer memory. General control operation can be changed under safe control (when equipment is under safe operation or at an emergency stop). Since monitoring of the status is possible from the CPU, settings of control program can be checked to notify the operator for measures, reducing troubleshooting time.

Notify that program 7 is not set to the set program



Notifying that program 7 is not set

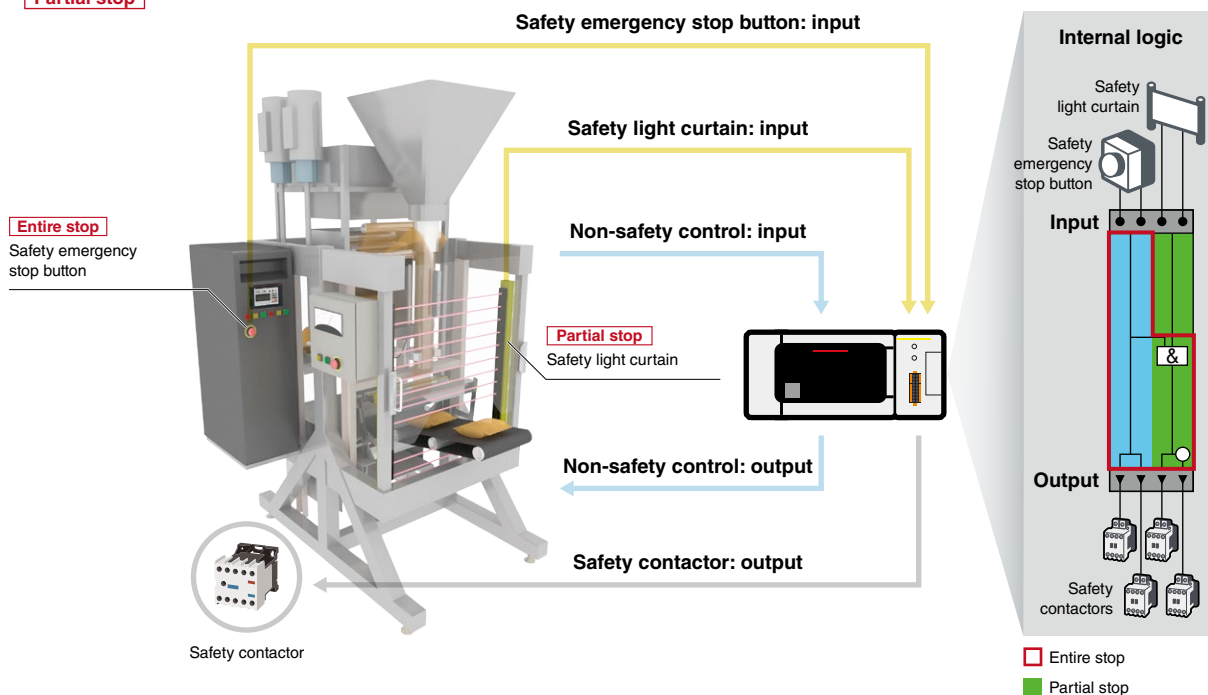
## Application example

### ■ Packaging machine

When a safety extension module is embedded with a packaging machine, pressing a safety emergency stop button stops all the safety contactors. While, a safety light curtain detects a person, only the safety contactors of the processing part will stop.

#### Program number: 7 Overview: AND control (2)

- When the safety emergency stop button is pushed, all the safety contactors are stopped **Entire stop**
- When the safety light curtains detect a person, only the safety contactors in the processing part are stopped **Partial stop**



## MELSEC iQ-F Series Safety extension module specifications

Item	Safety main module FX5-SF-MU4T5	Safety input expansion module FX5-SF-8DI4
Category	Category 4 (DIN EN ISO 13849-1)	
Safety Integrity Level (SIL)	SIL 3 (IEC 61508)/SIL CL 3 (IEC 62061)	
Performance Level (PL)	PL e (DIN EN ISO 13849-1)	
PFHd (probability of a dangerous failure per hour)	1.5 × 10 <sup>-9</sup> ...1.5 × 10 <sup>-8</sup>	
Degree of protection (EN/IEC 60529)	IP54 (IEC 60529)	
EMC	EN 61000-6-2, EN 61131-2, DIN EN 61326-3-1, EN 55011 (class A)	
T <sub>M</sub> (mission time)	20 years (EN ISO 13849-1)	
Weight (kg)	0.3	0.25
External dimensions (H x W x D, mm)	90 × 50 × 102.2	
<b>Safety input</b>		
Number of input points	4	8
Input voltage (ON) (V DC)	13...30	
Input voltage (OFF) (V DC)	-5...5	
Input current (ON) (mA)	3 (2.4...3.8)	
Input current (OFF) (mA)	-2.5...2.1	
<b>Safety output</b>		
Number of output points	4	-
Output method	Source output, short-circuit protection, cross-circuit detection*1	-
Output voltage (V DC)	18.4...30.0	-
<b>Supported conditions</b>		
Compatible CPU module	FX5U/FX5UC: Ver. 1.200 or later	
Engineering tool	GX Works3: Ver. 1.060N or later	

\*1. A cross-circuit detection is performed only in the module.

## Safety Components partner products

**IDEC**

**SICK**  
Sensor Intelligence.

**Panasonic**

**EUCHNER**





## Providing safety devices to cover a wide range of requirements, assuring a safe environment for operators and machines

By thoroughly pursuing safety of environment where operators and machines work together, IDEC Corporation develops products and proposes system giving safety top priority to ensure personnel safety even if machines become faulty or operators make a mistake. To support safety and productivity,

IDEC provides a variety of functional safety products. Along with proposals concerning safety related devices and safety systems according to risk, safety awareness and consulting activities help enhance safety at production sites.



**Interlock switches**  
HS1, HS3, HS5, HS6

Interlock switches allow a machine to start only when the guard is closed or the closed guard is locked.



**Safety laser scanner SE2L**  
**Safety light curtains SE4D**

Light beams and laser beams are used to safeguard personnel. New model laser scanner is the world smallest with safety protection zone of 5 m and 270°. High functional model configurable using Master and Slave configuration.



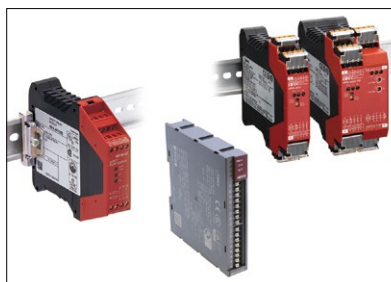
**Emergency stop switches**  
XA, XW, XN

IDEC original technology realizes the safety level higher than the international standard requirements. These switches are ideal for safety system configuration.



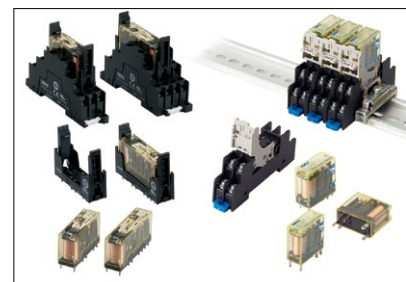
**Enabling switches**  
HE2B, HE3B, HE6B, HE2G

Safety devices for preventing unexpected starting of a machine when operation is required in the hazardous area inside the guard.



**Safety relay modules**  
HR5S, HR1S-AF, HR2S

The safety relay module compliant with Category 2 system has been added to the lineup, which enables configuration of the ideal safety system against machine risks.



**Force guided relays**  
RF1, RF2

Detects contact welding. IDEC Corporation is the only one manufacturer providing 2-, 4- and 6-pole force guided relays in Japan.

## IDEC CORPORATION

### Head Office

6-64, Nishi-Miyahara-2-Chome, Yodogawa-ku, Osaka 532-0004, Japan

<b>USA</b>	IDEC Corporation	Tel: +1-408-747-0550	opencontact@idec.com	<b>Hong Kong</b>	IDEC Izumi (H.K.) Co., Ltd.	Tel: +852-2803-8989	info@hk.idec.com
<b>Germany</b>	IDEC Elektrotechnik GmbH	Tel: +49-40-25 30 54 - 0	service@eu.idec.com	<b>China/Shanghai</b>	IDEC (Shanghai) Corporation	Tel: +86-21-6135-1515	idec@cn.idec.com
<b>Singapore</b>	IDEC Izumi Asia Pte. Ltd.	Tel: +65-6746-1155	info@sg.idec.com	<b>China/Shenzhen</b>	IDEC (Shenzhen) Corporation	Tel: +86-755-8356-2977	idec@cn.idec.com
<b>Thailand</b>	IDEC Asia (Thailand) Co., Ltd.	Tel: +66-2-392-9765	sales@th.idec.com	<b>China/Beijing</b>	IDEC (Beijing) Corporation	Tel: +86-10-6581-6131	idec@cn.idec.com
<b>Australia</b>	IDEC Australia Pty. Ltd.	Tel: +61-3-8523-5900	sales@au.idec.com	<b>Japan</b>	IDEC Corporation	Tel: +81-6-6398-2527	marketing@idec.co.jp
<b>Taiwan</b>	IDEC Taiwan Corporation	Tel: +886-2-2698-3929	service@tw.idec.com				

[www.idec.com](http://www.idec.com)

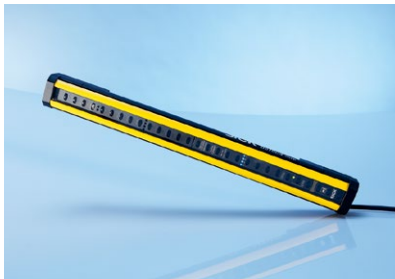


Sensor Intelligence.

## State-of-the-art safety system satisfying the international standard

As well as efficiency and high-speed performance, operational safety is fundamental requirement of factory automation. At a factory where machines operate, safety measure needs to be taken in the blind zones around machines. SICK safety system is the ideal products for machinery safety. The product

lineups include advanced products which meet high safety standard of Europe such as safety light curtains and safety laser scanners, etc. These best-in-class products in Europe provide strong support to customers worldwide.



**Safety light curtain  
deTec4 Core**

Simple assembly with innovative mounting. Up to 15 m scanning range, ambient operating temperature of -30 °C to +55 °C. Flexi Loop-compatible M12 (5 pin) male connector.



**Safety laser scanner  
microScan3 Core I/O**

Innovative safeHDDM® scanning technology. Scanning angle: 275°, protective field range: 4.0 m, 5.5 m, and 9.0 m. Realizes reliable performance immune to ambient light and dust.



**Transponder safety switches  
STR1**

High level of prevention against tampering. Universally coded, uniquely coded, and permanently coded sensors are available. Fast diagnostics via LED status indicator. OSSDs safety outputs type.



**Safety light curtain  
deTec4**

Upper range model designed further developing the product concept of deTec4 Core. Cascade connection up to three devices. Scanning range up to 30 m.



**The smallest safety laser scanner  
nanoScan3 Pro I/O**

Innovative safeHDDM® scanning technology. Scanning angle: 275°, protective field range: 3.0 m. Safety collision prevention and localization for AGC, AGV, and AMR (automated guide vehicles).



**Magnetic safety switches  
RE1, RE2**

Robust and long product life cycle with less maintenance design. Compact housing can be installed with a minimum use of space.

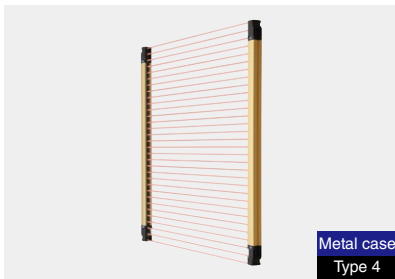


# Panasonic

## Diverse lineup of variety of safety light curtains and safety sensors

Safety regulations have been implemented around the world and safety product designs according to the risk level is the fundamental requirement. Panasonic Industrial Devices SUNX's safety light curtains and safety sensors, with their

concept of "support for both safety and productivity," keep evolving and are available in a wide variation through extensive global distribution network.



**Safety light curtain  
SF4D Series**

The SF4D Series are standard safety light curtains featuring robust and high-performance, and available from variety of types supporting minimum sensing object, Japanese press, etc.



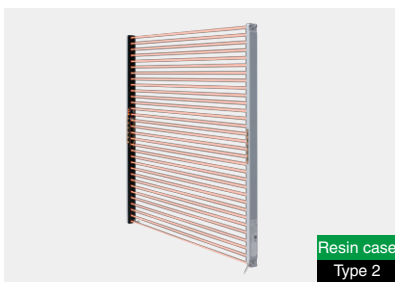
**Compact safety light curtain  
SF4B-C Series**

Realizes "compact," "light," and "optimum cost." Mounts flush on aluminum frames. Compact profile design, maximize the machinery opening area.



**Ultra-slim safety light curtain  
SF4C Series**

Ultra-slim type with a slimness of 13 mm. Finger type with a shorter safety distance fits into a smaller equipment.



**Ultra-slim safety light curtain  
SF2C Series**

Competitively priced Type 2 has been added to the Ultra-slim type Series with a slimness of 13 mm. Reduces wiring and adjusting beam axis is easy.



**Safety beam sensor  
ST4 Series**

Safety beam sensor that can be used from a single beam axis. A standard sensor size can ensure safety in a narrow area.



**Safety liquid leak sensor  
SQ4 Series**

Controls abnormal liquid leak in two stages. Improves productivity and ensures safety of personnel.

Panasonic Industrial Devices SUNX Co., Ltd. Global Sales Department  
TEL: +81-568-33-7861 FAX: +81-568-33-8591 <http://panasonic.net/id/pidsx/global>

## EUCHNER

### EUCHNER - More than Safety

EUCHNER is a pioneer and world leader for Safety Systems for safeguarding humans and processes machine doors and safety guards. For more than 60 years, EUCHNER has been developing and producing high-quality electromechanical and electronic systems. Industrial safety engineering is our

core business. Our safety switches and electronic key system reliably safeguard and monitor safety doors on machines and installations. We help to minimize risks and to increase product quality and productivity.



**Multifunctional Gate Box  
MGB**

Among safeguarding against dangerous machine movements, the MGB combines integrated operating functions with a simple and robust design. Intuitive operation is guaranteed.



**Transponder-coded safety switches with guard locking  
CET/CTP/CEM**

Safety switches with guard locking are used to prevent unintentional opening of a safety doors or covers while dangerous machine movements are being performed.



**Transponder-coded safety switches with guard locking  
CES**

CES safety switches monitor safety doors and covers on machines and installations. Depending on the application, various technologies and functional principles are available.



**Key Adapter for external  
Transponder-coded evaluation  
CKS**

CKS provides enhanced key reading for safety applications in PL e Category 4. Versatile use, e.g. as a lockout mechanism, authorization for selecting operating modes, key transfer system.



**Electronic-Key-System  
EKS**

Typical applications for the EKS are the controlling and management of access rights for machinery. The EKS is an open system specifically designed for industrial use.



**Enabling switches  
ZS**

Enabling switches are used wherever personnel must work in the danger area on machines and installations. The robust and ergonomic design is suitable for numerous applications.

**EUCHNER GmbH + Co. KG** KohlhammerstraBe 16 D-70771 Leinfelden-Echterdingen

TEL: +49 711 7597-0 FAX: +49 711 753316 <http://www.euchner.de>

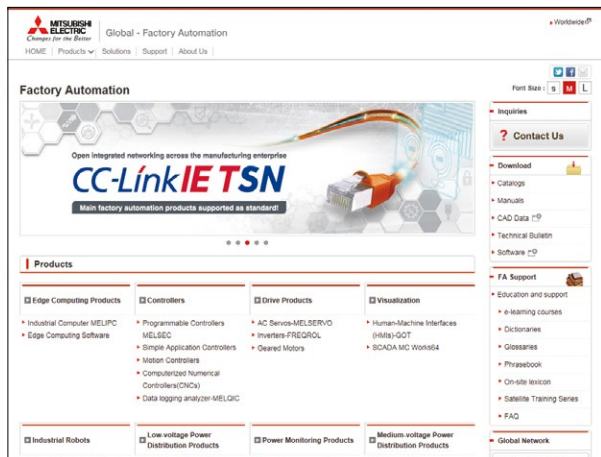
## Factory Automation Global website

Mitsubishi Electric Factory Automation provides a mix of services to support its customers worldwide. A consolidated global website is the main portal, offering a selection of support tools and a window to its local Mitsubishi Electric sales and support network.

### ■ From here you can find:

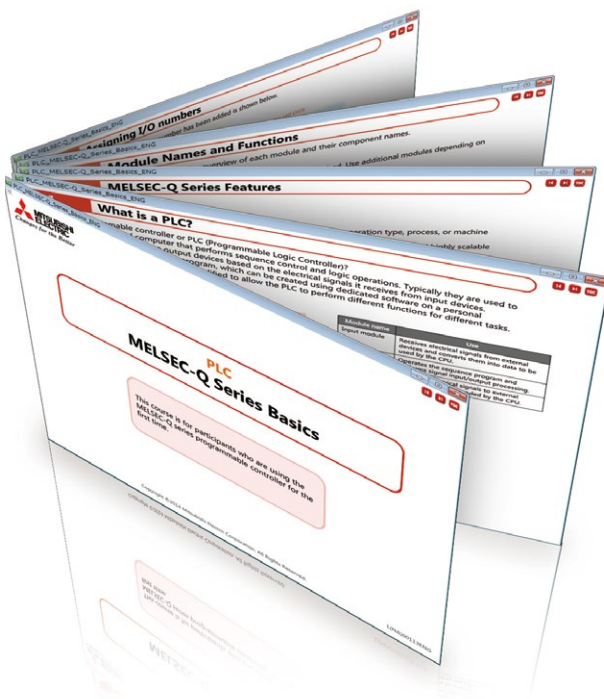
- Overview of available factory automation products
- Library of downloadable literature
- Support tools such as online e-learning courses, terminology dictionary, etc.
- Global sales and service network portal
- Latest news related to Mitsubishi Electric factory automation

**Mitsubishi Electric Factory Automation  
Global website:  
[www.MitsubishiElectric.com/fa](http://www.MitsubishiElectric.com/fa)**



## Online e-learning

An extensive library of e-learning courses covering the factory automation product range has been prepared. Courses from beginner to advanced levels of difficulty are available in various languages.



### ■ Beginner level

Designed for newcomers to Mitsubishi Electric Factory Automation products gaining a background of the fundamentals and an overview of various products related to the course.

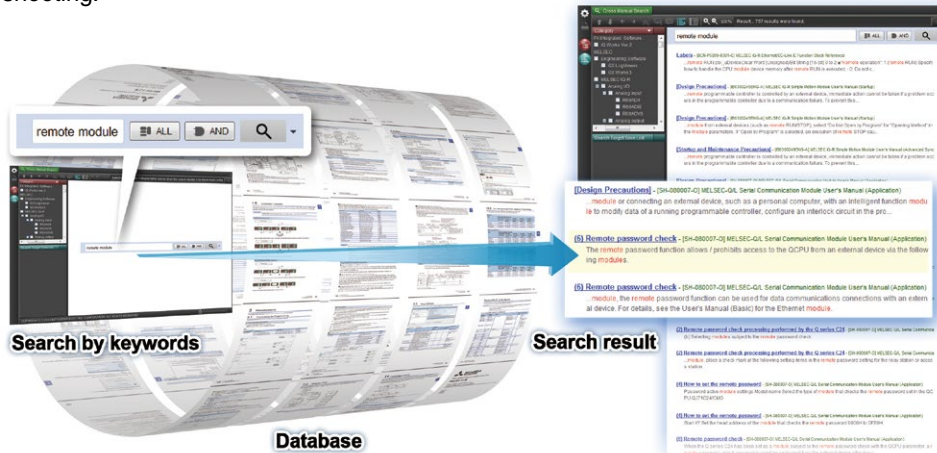
### ■ Basic to Advanced levels

These courses are designed to provide education at all levels. Various different features are explained with application examples providing an easy and informative resource for in-house company training.

## Innovative next-generation, e-Manual

### e-Manual Viewer

The e-Manual viewer is a next-generation digital manual offered by Mitsubishi Electric that consolidates factory automation products manuals into an easy-to-use package with various useful features integrated into the viewer. The e-Manual allows multiple manuals to be cross-searched at once, further reducing time for setting up products and troubleshooting.



#### Key features included

- One-stop database containing all required manuals, with local file cache
- Included with GX Works3 engineering software
- Also available in tablet version
- Easily download manuals all at once
- Multiple users can share the latest manuals and knowhow with document sharing function
- Directly port sample programs within manuals to GX Works3
- Downloaded manuals are usable offline

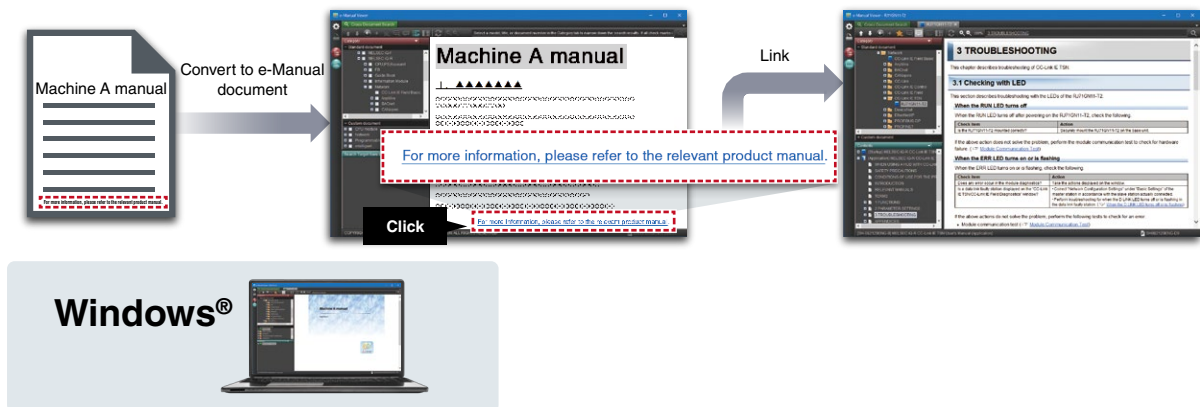
**Windows®**

**iOS**

**Android™**

### e-Manual Create

e-Manual Create is software for converting word files and chm files to e-Manual documents. e-Manual Create allows users to directly refer to Mitsubishi Electric e-Manuals from user's customized device maintenance manuals and such, supporting quick troubleshooting and reduction in document creation process.



\* To obtain the Windows® version of e-Manual Viewer and e-Manual Create, please contact your local Mitsubishi Electric sales office or representative.

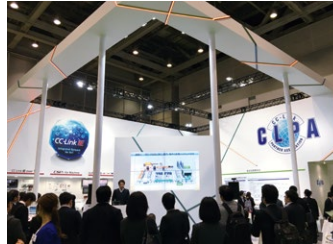
# CC-Link Partner Association (CLPA) - Actively promoting worldwide adoption of CC-Link networks

## Proactively supporting CC-Link, from promotion to specification development

The CC-Link Partner Association (CLPA) was established to promote the worldwide adoption of the CC-Link open-field network. By conducting promotional activities such as organizing trade shows and seminars, conducting conformance tests, and providing catalogs, brochures and website information, CLPA activities are successfully increasing the number of CC-Link partner manufacturers and CC-Link-compatible products. As such, CLPA is playing a major role in the globalization of CC-Link.



Seminar



Trade show



Conformance testing lab

Visit the **CLPA website** for the latest **CC-Link** information.

**URL: [www.cc-link.org](http://www.cc-link.org)**

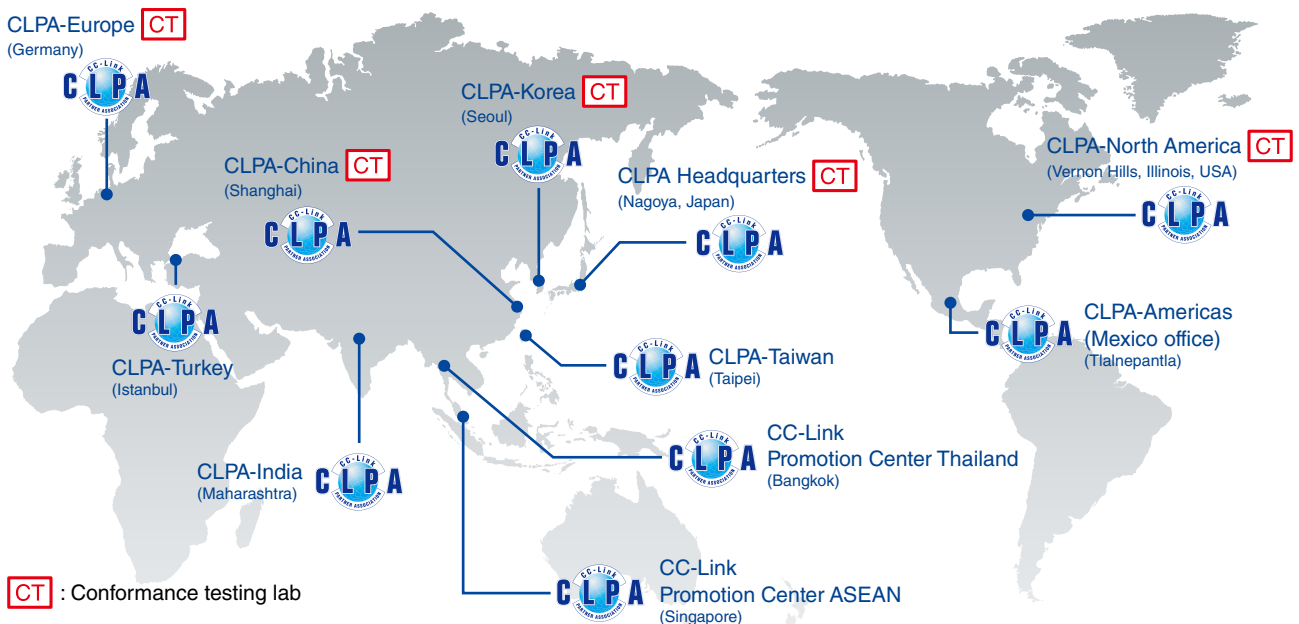


CLPA Headquarters  
 6F Ozone Front Bldg. 3-15-58 Ozone  
 Kita-ku, Nagoya 462-0825, JAPAN  
 TEL: +81-52-919-1588 FAX: +81-52-916-8655  
 e-mail: [info@cc-link.org](mailto:info@cc-link.org)



## Global influence of CC-Link continues to spread

CC-Link is supported globally by CLPA. With offices throughout the world, support for partner companies can be found locally. Each regional CLPA office undertakes various support and promotional activities to further the influence of CC-Link/CC-Link IE in that part of the world. For companies looking to increase their presence in their local area, CLPA is well placed to assist these efforts through offices in all major regions.



## Extensive global support coverage providing expert help whenever needed

### ■ Global FA centers

#### ■ EMEA

##### Europe FA Center

MITSUBISHI ELECTRIC EUROPE B.V. Polish Branch  
Tel: +48-12-347-65-81

##### Germany FA Center

MITSUBISHI ELECTRIC EUROPE B.V. German Branch  
Tel: +49-2102-486-0 / Fax: +49-2102-486-1120

##### UK FA Center

MITSUBISHI ELECTRIC EUROPE B.V. UK Branch  
Tel: +44-1707-27-8780 / Fax: +44-1707-27-8695

##### Czech Republic FA Center

MITSUBISHI ELECTRIC EUROPE B.V. Czech Branch  
Tel: +420-255 719 200

##### Italy FA Center

MITSUBISHI ELECTRIC EUROPE B.V. Italian Branch  
Tel: +39-039-60531 / Fax: +39-039-6053-312

##### Russia FA Center

MITSUBISHI ELECTRIC (RUSSIA) LLC ST.  
Petersburg Branch  
Tel: +7-812-633-3497 / Fax: +7-812-633-3499

##### Turkey FA Center

MITSUBISHI ELECTRIC TURKEY A.S Umraniye Branch  
Tel: +90-216-526-3990 / Fax: +90-216-526-3995

#### ■ Asia-Pacific

##### China

##### Beijing FA Center

MITSUBISHI ELECTRIC AUTOMATION (CHINA) LTD.  
Beijing FA Center  
Tel: +86-10-6518-8830 / Fax: +86-10-6518-2938

##### Guangzhou FA Center

MITSUBISHI ELECTRIC AUTOMATION (CHINA) LTD.  
Guangzhou FA Center  
Tel: +86-20-8923-6730 / Fax: +86-20-8923-6715

##### Shanghai FA Center

MITSUBISHI ELECTRIC AUTOMATION (CHINA) LTD.  
Shanghai FA Center  
Tel: +86-21-2322-3030 / Fax: +86-21-2322-3000

##### Tianjin FA Center

MITSUBISHI ELECTRIC AUTOMATION (CHINA) LTD.  
Tianjin FA Center  
Tel: +86-22-2813-1015 / Fax: +86-22-2813-1017

##### Taiwan

##### Taipei FA Center

SETSUYO ENTERPRISE CO., LTD.  
Tel: +886-2-2299-9917 / Fax: +886-2-2299-9963

##### Korea

##### Korea FA Center

MITSUBISHI ELECTRIC AUTOMATION KOREA CO., LTD.  
Tel: +82-2-3660-9632 / Fax: +82-2-3664-0475

##### Thailand

##### Thailand FA Center

MITSUBISHI ELECTRIC FACTORY AUTOMATION  
(THAILAND) CO., LTD.  
Tel: +66-2092-8600 / Fax: +66-2043-1231-33

##### ASEAN

##### ASEAN FA Center

MITSUBISHI ELECTRIC ASIA PTE. LTD.  
Tel: +65-6470-2480 / Fax: +65-6476-7439

##### Indonesia

##### Indonesia FA Center

PT. MITSUBISHI ELECTRIC INDONESIA  
Cikarang Office  
Tel: +62-21-2961-7797 / Fax: +62-21-2961-7794

##### Vietnam

##### Hanoi FA Center

MITSUBISHI ELECTRIC VIETNAM COMPANY LIMITED  
Hanoi Branch Office  
Tel: +84-24-3937-8075 / Fax: +84-24-3937-8076

##### Ho Chi Minh FA Center

MITSUBISHI ELECTRIC VIETNAM COMPANY LIMITED  
Tel: +84-28-3910-5945 / Fax: +84-28-3910-5947

##### Philippines

##### Philippines FA Center

MELCO Factory Automation Philippines Inc.  
Tel: +63-(0)2-8256-8042

##### India

##### India Ahmedabad FA Center

MITSUBISHI ELECTRIC INDIA PVT. LTD.  
Ahmedabad Branch  
Tel: +91-7965120063

##### India Bangalore FA Center

MITSUBISHI ELECTRIC INDIA PVT. LTD.  
Bangalore Branch  
Tel: +91-80-4020-1600 / Fax: +91-80-4020-1699

##### India Chennai FA Center

MITSUBISHI ELECTRIC INDIA PVT. LTD.  
Chennai Branch  
Tel: +91-4445548772 / Fax: +91-4445548773

##### India Coimbatore FA Center

MITSUBISHI ELECTRIC INDIA PVT. LTD.  
Coimbatore Branch  
Tel: +91-422-438-5606

##### India Gurgaon FA Center

MITSUBISHI ELECTRIC INDIA PVT. LTD.  
Gurgaon Head Office  
Tel: +91-124-463-0300 / Fax: +91-124-463-0399

##### India Pune FA Center

MITSUBISHI ELECTRIC INDIA PVT. LTD.  
Pune Branch  
Tel: +91-20-2710-2000 / Fax: +91-20-2710-2100

#### ■ Americas

##### USA

##### North America FA Center

MITSUBISHI ELECTRIC AUTOMATION, INC.  
Tel: +1-847-478-2469 / Fax: +1-847-478-2253

##### Mexico

##### Mexico City FA Center

MITSUBISHI ELECTRIC AUTOMATION, INC.  
Mexico Branch  
Tel: +52-55-3067-7511

##### Mexico FA Center

MITSUBISHI ELECTRIC AUTOMATION, INC.  
Queretaro Office  
Tel: +52-442-153-6014

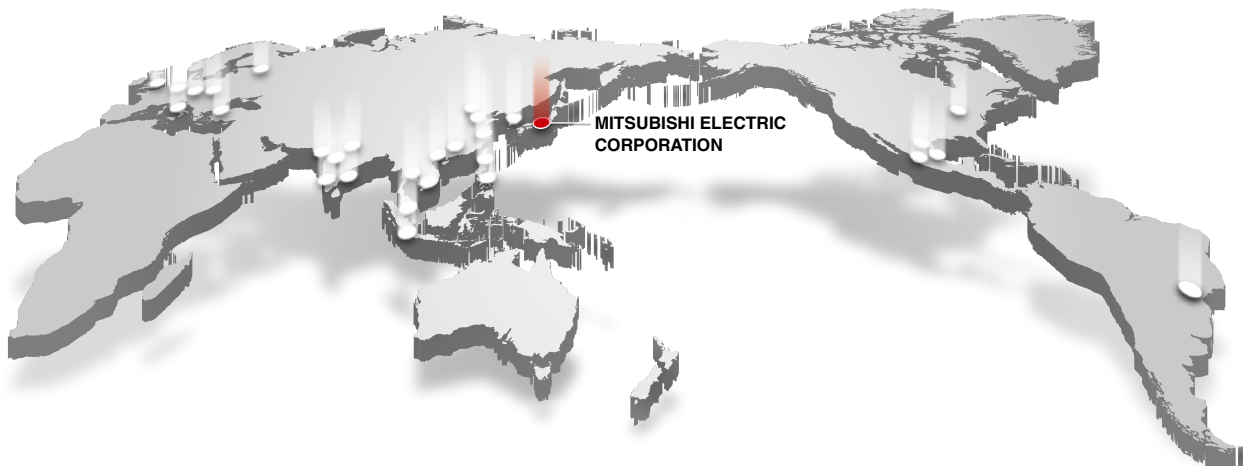
##### Mexico Monterrey FA Center

MITSUBISHI ELECTRIC AUTOMATION, INC.  
Monterrey Office  
Tel: +52-55-3067-7521

##### Brazil

##### Brazil FA Center

MITSUBISHI ELECTRIC DO BRASIL COMERCIO E  
SERVICOS LTDA.  
Tel: +55-11-4689-3000 / Fax: +55-11-4689-3016



# General specifications/Product list

## General specifications\*1

Item	MELSEC iQ-R Series Safety CPU	MELSEC iQ-F Series Safety extension module*2				MELSEC-WS Series
Operating ambient temperature	0...55°C (when a base unit other than an extended temperature range base unit is used) 0...60°C (when an extended temperature range base unit is used)*3	-20...50°C				-25...55°C*4
Storage ambient temperature	-25...75°C				-25...70°C	
Operating ambient humidity	5...95% RH, non-condensing				10...95% RH, non-condensing	
Storage ambient humidity	5...95% RH, non-condensing				10...95% RH, non-condensing	
Vibration resistance	Compliant with JIS B 3502 and IEC 61131-2	-	Frequency	Constant acceleration	Half amplitude	Sweep count
		Under intermittent vibration	5...8.4 Hz	-	3.5 mm	10 times each in X, Y, Z directions
			8.4...150 Hz	9.8 m/s <sup>2</sup>	-	
		Under continuous vibration	5...8.4 Hz	-	1.75 mm	-
8.4...150 Hz	4.9 m/s <sup>2</sup>		-			
Shock resistance	Compliant with JIS B 3502 and IEC 61131-2 (147 m/s <sup>2</sup> , 3 times each in directions X, Y, Z)				Continuous shock: 10 g, 16 ms (EN 60068-2-29) Single shock: 30 g, 11 ms (EN 60068-2-27)	
Operating atmosphere	No corrosive gases*5, no flammable gases, no excessive conductive dust				55°C, 95% rel. humidity (IEC 61131-2) no corrosive gases	
Operating altitude*6	0...2000 m*7				0...2000 m (80 kPa)	
Installation location	Inside a control panel					
Overvoltage category*8	≤ II					
Pollution degree*9	≤ 2					
Equipment class	Class 1		Class 2		Class 3	

\*1. For general specifications of other products, please refer to the relevant product manuals.

\*2. General specifications stated are the same as the CPU module connected.

\*3. Enables standard MELSEC iQ-R Series modules to support extended operating ambient temperature of 0 to 60°C, ensuring the same performance as the standard operating ambient temperature (0 to 55°C). When requiring to use in an ambient temperature environment higher than 60°C, please consult your local Mitsubishi Electric representative.

\*4. The operating ambient temperature of the WS0-GCC100202 is 0 to 55°C.

\*5. The special coated product, which meets the regulation (JIS C 60721-3-3/IEC 60721-3-3 3C2) related to corrosive gas, is available for the use in a corrosive gas environment. For more details on the special coated product, please consult your local Mitsubishi Electric representative.

\*6. Do not use or store the programmable controller under pressure higher than the atmospheric pressure of altitude 0 m. Doing so may cause malfunction. When using the programmable controller under pressure, please consult your local Mitsubishi Electric representative.

\*7. When used at an altitude higher than 2000 m, the upper limits of the permissible voltage and the operating ambient temperature become lower. Please consult your local Mitsubishi Electric representative.

\*8. This indicates the section of the power supply to which the equipment is assumed to be connected between the public electrical power distribution network and the machinery within premises. Category 2 applies to equipment for which electrical power is supplied from fixed facilities. The surge voltage withstand level for up to the rated voltage of 300 V is 2500 V.

\*9. This index indicates the degree to which conductive material is generated in terms of the environment in which the equipment is used. Pollution level 2 is when only non-conductive pollution occurs. A temporary conductivity caused by condensing must be expected occasionally.

## Product list

### Programmable automation controller MELSEC iQ-R Series



Item	Model	Outline		
Safety CPU*10	R08SF CPU-SET	Program capacity: 80K steps (40K steps for safety programs); Basic operation processing speed (LD instruction), 0.98 ns	●	●
	R16SF CPU-SET	Program capacity: 160K steps (40K steps for safety programs); Basic operation processing speed (LD instruction), 0.98 ns	●	●
	R32SF CPU-SET	Program capacity: 320K steps (40K steps for safety programs); Basic operation processing speed (LD instruction), 0.98 ns	●	●
	R120SF CPU-SET	Program capacity: 1200K steps (40K steps for safety programs); Basic operation processing speed (LD instruction), 0.98 ns	●	●
Main base	R35B	5 slots	●	●
	R38B	8 slots	●	●
	R312B	12 slots	●	●
Power supply	R61P	AC power supply; input, 100...240 V AC; output, 5 V DC/6.5 A	●	●
	R62P	AC power supply; input, 100...240 V AC; output, 5 V DC/3.5 A, 24 V DC/0.6 A	●	●
	R64P	AC power supply; input, 100...240 V AC; output, 5 V DC/9 A	●	●
	R63P	DC power supply; input, 24 V DC; output, 5 V DC/6.5 A	●	●
CC-Link IE TSN master/local module	RJ71GN11-T2	1 G/100 Mbps, master/local station	●	-
Motion	RD78G4	Maximum number of control axes: 4	●	-
	RD78G8	Maximum number of control axes: 8	●	-
	RD78G16	Maximum number of control axes: 16	●	-
	RD78G32	Maximum number of control axes: 32	●	-
	RD78G64	Maximum number of control axes: 64	●	-
	RD78GHV	High-performance type, maximum number of control axes: 128	●	-
	RD78GHW	High-performance type, maximum number of control axes: 256	●	-
CC-Link IE Field Network master/local module	RJ71GF11-T2	1 Gbps, master/local station	-	●
Simple motion	RD77GF4	4 axes, linear/circular interpolation, advanced synchronous control	-	●
	RD77GF8	8 axes, linear/circular interpolation, advanced synchronous control	-	●
	RD77GF16	16 axes, linear/circular interpolation, advanced synchronous control	-	●
	RD77GF32	32 axes, linear/circular interpolation, advanced synchronous control	-	●
MELSOFT GX Works3	SW1DND-GXW3-E	Version 1.015R or later	●	●

\*10. R□SF CPU-SET consists of R□SF CPU and R6SFM.

# General specifications/Product list

## Block type safety remote modules



...CC-Link IE TSN



...CC-Link IE Field Network

**DB** ...Co-branded product\*\*

Item	Model	Outline		
Safety input	NZ2GNSS2-8D	Single wiring: 8 points/Double wiring: 4 points, 24 V DC Response time: 1...70 ms, Negative common type Spring-clamp terminal block, 2-wire	●	-
	NZ2GFSS2-8D	Single wiring: 8 points/Double wiring: 4 points, 24 V DC Response time: 0.4 ms, Negative common type, Spring-clamp terminal block, 2-wire	-	●
	NZ2GFSS2-32D	Single wiring: 32 points/Double wiring: 16 points, 24 V DC Response time: 0.4 ms, Negative common type, Spring-clamp terminal block, 2-wire	-	●
Safety output	NZ2GNSS2-8TE	Single wiring: 8 points/Double wiring: 4 points, 24 V DC (0.5 A) Source + source type, Spring-clamp terminal block, 2-wire	●	-
	NZ2GFSS2-8TE	Single wiring: 8 points/Double wiring: 4 points, 24 V DC Response time: 0.4 ms, Source + source type, Spring-clamp terminal block, 2-wire	-	●
Safety I/O combined	NZ2GNSS2-16DTE	Input: 8 points (single wiring)/4 points (double wiring), 24 V DC Response time: 1...70 ms, Negative common type Output: 8 points (single wiring)/4 points (double wiring), 24 V DC (0.5 A) Source + source type, Spring-clamp terminal block, 2-wire	●	-
	NZ2GFSS2-16DTE	Input: 8 points (single wiring)/4 points (double wiring), 24 V DC Response time: 0.4 ms, Negative common type Output: 8 points (single wiring)/4 points (double wiring), 24 V DC (0.5 A) Source + source type, Spring-clamp terminal block, 2-wire	-	●
Extension safety output	NZ2EXSS2-8TE*2	Single wiring: 8 points/Double wiring: 4 points, 24 V DC Source + source type, Spring-clamp terminal block, 2-wire	-	●
Waterproof (IP67) safety I/O combined	NZ2GFS12A2-14DT <b>DB</b>	Input: 12 points (single wiring)/6 points (double wiring), 24 V DC Negative common type Output: not possible (single wiring)/2 points (double wiring), 24 V DC Source + sink type, Waterproof connector, 2-wire	-	●
	NZ2GFS12A2-16DTE <b>DB</b>	Input: 12 points (single wiring)/6 points (double wiring), 24 V DC Negative common type Output: 4 points (single wiring)/2 points (double wiring), 24 V DC Source + source type, Waterproof connector, 2-wire	-	●

## Safety controller MELSEC-WS Series

**DB** ...Co-branded product\*\*

Item	Model	Outline
CPU	WS0-CPU000200 (WS0-CPU0)*3 <b>DB</b>	Program capacity: 255 FBs, Scan cycle: 4 ms, RS-232 Interface
CPU (with EFI)	WS0-CPU130202 (WS0-CPU1)*3 <b>DB</b>	EFI-equipped (EFI is the communication interface for setting SICK's safety products.) Flexi Link with EFI RS-232 Interface
CPU (with EFI, Flexi Line)	WS0-CPU320202 (WS0-CPU3)*3 <b>DB</b>	EFI-equipped (EFI is the communication interface for setting SICK's safety products.) Flexi Link with EFI Flexi Line with EFI RS-232 Interface, USB Interface
Memory plug for CPU	WS0-MPL000201 (WS0-MPL0)*3 <b>DB</b>	For storing CPU parameters and programs (required) (for WS0-CPU0/WS0-CPU1)
	WS0-MPL100201 (WS0-MPL1)*3 <b>DB</b>	For storing CPU parameters and programs (required) (for WS0-CPU3)
Safety input	WS0-XTDI80202 (WS0-XTDI)*3 <b>DB</b>	Safety input: 8 points (single input), Spring-clamp terminal block
Safety I/O combined	WS0-XTIO84202 (WS0-XTIO)*3 <b>DB</b>	Safety input: 8 points (single input), Safety output: 4 points (single output) Output current: max. 2 A, Spring-clamp terminal block, Fast shut off function (response of 8 ms)
Safety relay output	WS0-4RO4002 (WS0-4RO)*3 <b>DB</b>	Safety output: safety relay output 4 points, Switching current: max. 6 A
USB/RS-232 conversion cable	WS0-C20M8U <b>DB</b>	USB/RS-232 conversion cable for PC-CPU connection (2 m)
	WS0-UC-232A*4 <b>DB</b>	USB/RS-232 conversion cable (35 cm)
RS-232 cable connecting to CPU	WS0-C20R2 <b>DB</b>	RS-232 cable for PC-CPU connection (2 m)
CC-Link interface	WS0-GCC100202 (WS0-GCC1)*3 <b>DB</b>	For CC-Link communication (general communication), Remote device station, CC-Link version 1.10
Ethernet interface	WS0-GETH00200 (WS0-GETH)*3 <b>DB</b>	For Ethernet TCP/IP connection (general communication)
Screw-in replacement terminal block	WS0-TBS4 <b>DB</b>	Screw-in replacement terminal block (4 pcs)
Spring-clamp replacement terminal block	WS0-TBC4 <b>DB</b>	Spring-clamp replacement terminal block (4 pcs)
Setting and Monitoring Tool	SW1DNN-WS0ADR-B*5	Setting and monitoring tool for safety controller

\*1. General specifications and product guarantee conditions for co-branded products may vary from those of general MELSEC products.

For more information, please refer to the relevant product manuals or contact your local Mitsubishi Electric sales office or representative.

\*2. Only NZ2GFSS2-32D can be connected.

\*3. Abbreviated product model name is shown in ( ) for this catalog. Please notify the full model name in the upper product list when contacting local Mitsubishi sales office or representative.

\*4. Use this in combination with WS0-C20R2.

\*5. For details on how to obtain the tool, please contact your local Mitsubishi Electric sales office or representative.



## Safety extension modules MELSEC iQ-F Series

DB ...Co-branded product\*\*1

Item	Model	Outline
Safety main module	FX5-SF-MU4T5 <b>DB</b>	Built-in program 9 types Safety input: 4 points (single input) Safety output: 4 points (single output) Off delay time: 0/0.5/1/1.5/2/2.5/3/3.5/4/5 s Spring-clamp terminal block
Safety input expansion module	FX5-SF-8DI4*2 <b>DB</b>	Built-in program 9 types*3 Safety input: 8 points (single input) Off delay time*4: 0/0.5/1/1.5/2/2.5/3/3.5/4/5 s Spring-clamp terminal block

- \*1. General specifications and product guarantee conditions for co-branded products may vary from those of general MELSEC products.  
For more information, please refer to the relevant product manuals or contact your local Mitsubishi Electric sales office or representative.
- \*2. The safety main module is necessary to connect to the CPU module.
- \*3. For built-in program, logic pass connecting method with the safety main module can be set for INPUT A and INPUT B each.
- \*4. Off delay time is set from the safety main module.

## Compliance with international quality assurance standards

All of Mitsubishi Electric's FA products have acquired the international quality assurance "ISO9001" and environment management system standard "ISO14001" certification. Mitsubishi Electric's products also comply with various safety standards, including UL standards.

\*For jointly developed and partner products, guaranteed quality standards may differ. Please refer to the product manuals for details.

### Safety Standards



Android and Google Play are trademarks of Google LLC.  
Apple and App Store are trademarks of Apple Inc., registered in the U.S. and other countries.  
Ethernet is a trademark of Xerox Corporation.  
IOS is a registered trademark of Cisco in the U.S. and other countries and is used under license.  
Microsoft and Windows are registered trademarks of Microsoft Corporation in the United States and other countries.  
OPC UA logo is registered trademarks of OPC Foundation.  
QR Code is a trademark or a registered trademark of DENSO WAVE INCORPORATED in JAPAN, the United States and/or other countries.  
All other company names and product names used in this document are trademarks or registered trademarks of their respective companies.

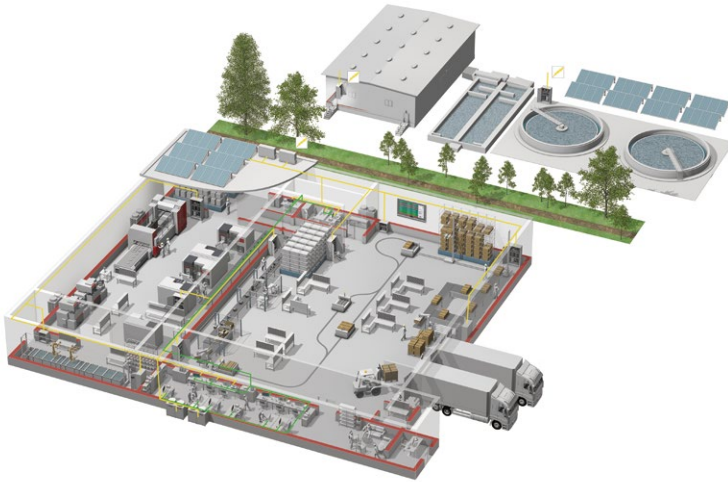
#### Precautions before use

This publication explains the typical features and functions of the products herein and does not provide restrictions or other information related to usage and module combinations. Before using the products, always read the product user manuals. Mitsubishi Electric will not be held liable for damage caused by factors found not to be the cause of Mitsubishi Electric; opportunity loss or lost profits caused by faults in Mitsubishi Electric products; damage, secondary damage, or accident compensation, whether foreseeable or not, caused by special factors; damage to products other than Mitsubishi Electric products; or any other duties.

#### For safe use

- To use the products given in this publication properly, always read the relevant manuals before beginning operation.
- The products have been manufactured as general-purpose parts for general industries, and are not designed or manufactured to be incorporated in a device or system used in purposes related to human life.
- Before using the products for special purposes such as nuclear power, electric power, aerospace, medicine or passenger-carrying vehicles, consult with Mitsubishi Electric.
- The products have been manufactured under strict quality control. However, when installing the products where major accidents or losses could occur if the products fail, install appropriate backup or fail-safe functions in the system.

# YOUR SOLUTION PARTNER



Mitsubishi Electric offers a wide range of automation equipment from PLCs and HMIs to CNC and EDM machines.

## A NAME TO TRUST

Since its beginnings in 1870, some 45 companies use the Mitsubishi name, covering a spectrum of finance, commerce and industry.

The Mitsubishi brand name is recognized around the world as a symbol of premium quality.

Mitsubishi Electric Corporation is active in space development, transportation, semi-conductors, energy systems, communications and information processing, audio visual equipment and home electronics, building and energy management and automation systems, and has 237 factories and laboratories worldwide in over 121 countries.

This is why you can rely on Mitsubishi Electric automation solution - because we know first hand about the need for reliable, efficient, easy-to-use automation and control in our own factories.

As one of the world's leading companies with a global turnover of over 4 trillion Yen (over \$40 billion), employing over 100,000 people, Mitsubishi Electric has the resource and the commitment to deliver the ultimate in service and support as well as the best products.



Low voltage: MCCB, MCB, ACB



Medium voltage: VCB, VCC



Power monitoring, energy management



Compact and Modular Controllers



Inverters, Servos and Motors



Visualisation: HMIs



Numerical Control (NC)



Industrial / Collaborative Robots



Processing machines: EDM, Lasers, IDS

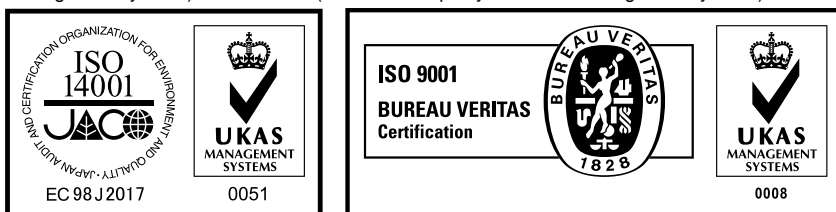


Transformers, Air conditioning, Photovoltaic systems

\* Not all products are available in all countries.

Country/Region	Sales office	Tel/Fax
USA	MITSUBISHI ELECTRIC AUTOMATION, INC. 500 Corporate Woods Parkway, Vernon Hills, IL 60061, U.S.A.	Tel : +1-847-478-2100 Fax : +1-847-478-2253
Mexico	MITSUBISHI ELECTRIC AUTOMATION, INC. Mexico Branch Boulevard Miguel de Cervantes Saavedra 301, Torre Norte Piso 5, Ampliacion Granada, Miguel Hidalgo, Ciudad de Mexico, Mexico, C.P.115200	Tel : +52-55-3067-7512
Brazil	MITSUBISHI ELECTRIC DO BRASIL COMERCIO E SERVICOS LTDA. Avenida Adelino Cardana, 293, 21 andar, Bethaville, Barueri SP, Brasil	Tel : +55-11-4689-3000 Fax : +55-11-4689-3016
Germany	MITSUBISHI ELECTRIC EUROPE B.V. German Branch Mitsubishi-Electric-Platz 1, 40882 Ratingen, Germany	Tel : +49-2102-486-0 Fax : +49-2102-486-7780
UK	MITSUBISHI ELECTRIC EUROPE B.V. UK Branch Travellers Lane, UK-Hatfield, Hertfordshire, AL10 8XB, U.K.	Tel : +44-1707-28-8780 Fax : +44-1707-27-8695
Ireland	MITSUBISHI ELECTRIC EUROPE B.V. Irish Branch Westgate Business Park, Ballymount, Dublin 24, Ireland	Tel : +353-1-4198800 Fax : +353-1-4198890
Italy	MITSUBISHI ELECTRIC EUROPE B.V. Italian Branch Centro Direzionale Colleoni - Palazzo Sirio, Viale Colleoni 7, 20864 Agrate Brianza (MB), Italy	Tel : +39-039-60531 Fax : +39-039-6053-312
Spain	MITSUBISHI ELECTRIC EUROPE, B.V. Spanish Branch Carretera de Rubi, 76-80-Apdo. 420, E-08190 Sant Cugat del Valles (Barcelona), Spain	Tel : +34-935-65-3131 Fax : +34-935-89-1579
France	MITSUBISHI ELECTRIC EUROPE B.V. French Branch 25, Boulevard des Bouvets, 92741 Nanterre Cedex, France	Tel : +33-1-55-68-55-68 Fax : +33-1-55-68-57-57
Czech Republic	MITSUBISHI ELECTRIC EUROPE B.V. Czech Branch, Prague Office Pekarska 621/7, 155 00 Praha 5, Czech Republic	Tel : +420-255-719-200
Poland	MITSUBISHI ELECTRIC EUROPE B.V. Polish Branch ul. Krakowska 48, 32-083 Balice, Poland	Tel : +48-12-347-65-00
Sweden	MITSUBISHI ELECTRIC EUROPE B.V. (Scandinavia) Hedvig Mollersgata 6, 223 55 Lund, Sweden	Tel : +46-8-625-10-00 Fax : +46-46-39-70-18
Russia	MITSUBISHI ELECTRIC (RUSSIA) LLC St. Petersburg Branch Piskarevsky pr. 2, bld 2, lit "Sch", BC "Benua", office 720; 195027 St. Petersburg, Russia	Tel : +7-812-633-3497 Fax : +7-812-633-3499
Turkey	MITSUBISHI ELECTRIC TURKEY A.S Umraniye Branch Serifali Mahallesi Nutuk Sokak No:5, TR-34775 Umraniye/Istanbul, Turkey	Tel : +90-216-526-3990 Fax : +90-216-526-3995
UAE	MITSUBISHI ELECTRIC EUROPE B.V. Dubai Branch Dubai Silicon Oasis, P.O.BOX 341241, Dubai, U.A.E.	Tel : +971-4-3724716 Fax : +971-4-3724721
South Africa	ADROIT TECHNOLOGIES 20 Waterford Office Park, 189 Witkoppen Road, Fourways, South Africa	Tel : +27-11-658-8100 Fax : +27-11-658-8101
China	MITSUBISHI ELECTRIC AUTOMATION (CHINA) LTD. Mitsubishi Electric Automation Center, No.1386 Hongqiao Road, Shanghai, China	Tel : +86-21-2322-3030 Fax : +86-21-2322-3000
Taiwan	SETSUYO ENTERPRISE CO., LTD. 6F, No.105, Wugong 3rd Road, Wugu District, New Taipei City 24889, Taiwan	Tel : +886-2-2299-2499 Fax : +886-2-2299-2509
Korea	MITSUBISHI ELECTRIC AUTOMATION KOREA CO., LTD. 7F to 9F, Gangseo Hangang Xi-tower A, 401, Yangcheon-ro, Gangseo-Gu, Seoul 07528, Korea	Tel : +82-2-3660-9569 Fax : +82-2-3664-8372
Singapore	MITSUBISHI ELECTRIC ASIA PTE. LTD. 307 Alexandra Road, Mitsubishi Electric Building, Singapore 159943	Tel : +65-6473-2308 Fax : +65-6476-7439
Thailand	MITSUBISHI ELECTRIC FACTORY AUTOMATION (THAILAND) CO., LTD. 12th Floor, SV.City Building, Office Tower 1, No. 896/19 and 20 Rama 3 Road, Kwaeng Bangpongpan, Khet Yannawa, Bangkok 10120, Thailand	Tel : +66-2092-8600 Fax : +66-2043-1231-33
Vietnam	MITSUBISHI ELECTRIC VIETNAM COMPANY LIMITED Unit 01-04, 10th Floor, Vincom Center, 72 Le Thanh Ton Street, District 1, Ho Chi Minh City, Vietnam	Tel : +84-28-3910-5945 Fax : +84-28-3910-5947
Indonesia	PT. MITSUBISHI ELECTRIC INDONESIA Gedung Jaya 8th Floor, JL. MH. Thamrin No.12, Jakarta Pusat 10340, Indonesia	Tel : +62-21-31926461 Fax : +62-21-31923942
India	MITSUBISHI ELECTRIC INDIA PVT. LTD. Pune Branch Emerald House, EL-3, J Block, M.I.D.C., Bhosari, Pune-411026, Maharashtra, India	Tel : +91-20-2710-2000 Fax : +91-20-2710-2100
Australia	MITSUBISHI ELECTRIC AUSTRALIA PTY. LTD. 348 Victoria Road, P.O. Box 11, Rydalmere, N.S.W 2116, Australia	Tel : +61-2-9684-7777 Fax : +61-2-9684-7245

Mitsubishi Electric Corporation Nagoya Works is a factory certified for ISO 14001 (standards for environmental management systems) and ISO 9001 (standards for quality assurance management systems).



## MITSUBISHI ELECTRIC CORPORATION

HEAD OFFICE: TOKYO BLDG., 2-7-3, MARUNOUCHI, CHIYODA-KU, TOKYO 100-8310, JAPAN  
[www.MitsubishiElectric.com](http://www.MitsubishiElectric.com)